



NIKE SOCCER






MOVE TO ZERO



Helping Protect The Future Of Sport For All Athletes*

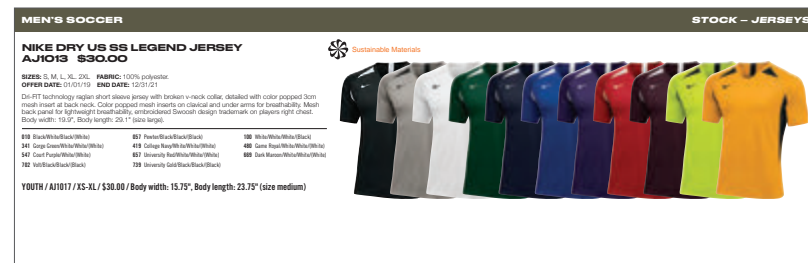
Move to Zero is Nike's journey toward zero carbon and zero waste to help protect the future of sport. We exist to serve athletes everywhere and that's why we're on a mission to help ensure a healthy planet. For us, there is no finish line.

[NikeTeam.com](https://www.nike.com) will now display a sunburst logo next to products made with sustainable materials.

Look for this logo  Sustainable Materials to find products made with at least 50% sustainable materials by weight, exclusive of trims. Sustainable materials include recycled polyester or organic cotton.

Recycled polyester reduces carbon emissions and waste.

Organic cotton is grown without synthetic fertilizers and with less water than conventional cotton.



For more information on Nike Sustainability please visit nike.com/sustainability or purpose.nike.com.



TABLE OF CONTENTS



STOCK JERSEYS	4
DIGITAL KIT	27
STOCK SHORTS	30
SOCKS	38
GOALKEEPER	41
REFEREE	49
TRAINING	51
ESSENTIALS	105
EQUIPMENT / ACCESSORIES	127
TEAM CONTACT INFORMATION	138
HEADWEAR INFORMATION	139



NIKE DRI-FIT ADV VAPOR V JERSEY

M • FZ9273 W • FZ9278 K • FZ9281

- 1 Heat Transfer Swoosh**
Swoosh execution is a high density heat transfer. The garment will also accept Direct Embroidery and Screen Prints.
- 2 Recycled Materials**
This garment is made with 100% recycled materials.
- 3 Cross Dye Technique**
The body fabric is executed in a cross dyed technique to amplify the knit language through tonal colors.
- 4 Performance Fabrics**
Dri-FIT ADV knit fabric on the front body, back body, and sleeves wicks sweat away, while mesh side panels offer breathability where athletes need it most.
- 5 Fit For All Athletes**
Continuing the new Women's fit, adding more space to the waist, allowing Her to be at Her best. Fit remains consistent for Men and Kids.
- 6 Signifier Language**
A direct one to one link of the EC24 chassis, celebrating the best athletes on the pitch.
- 7 Side Panel Construction**
The side panel is continued from the EC24 chassis which contributes to the efficiency of our patterns, reducing material waste.



NIKE DRI-FIT ADV VAPOR V JERSEY SS US

\$77.00

FABRIC: 100% polyester. **OFFER DATE:** 01/01/25 **END DATE:** 12/31/26

Designed for the biggest stages in soccer, now offered to your players. The VaporKnit V jersey is made with mesh side panels, premium knit fabric and the advanced sweat-wicking power of Nike Dri-FIT ADV. This product is made with at least 75% recycled polyester fibers. Side panel construction uses a more efficient pattern to help reduce material waste.

(Body / Neck Rib - Sleeve Cuff / Underarm - Side Panel / (Swoosh)

- 010** Black with Anthracite Combo / Black / Black / (White)
- 100** White with Pure Platinum Combo / White / White / (Black)
- 410** Midnight Navy with Loyal Blue Combo / Midnight Navy / Midnight Navy / (White)
- 463** Royal Blue with Sport Blue Combo / Royal Blue / Royal Blue / (White)
- 657** University Red with Speed Red Combo / University Red / University Red / (White)



MENS / FZ9273

SIZES: XS, S, M, L, XL, 2XL



WOMENS / FZ9278

SIZES: XS, S, M, L, XL, 2XL



KIDS / FZ9281

SIZES: XS, S, M, L, XL

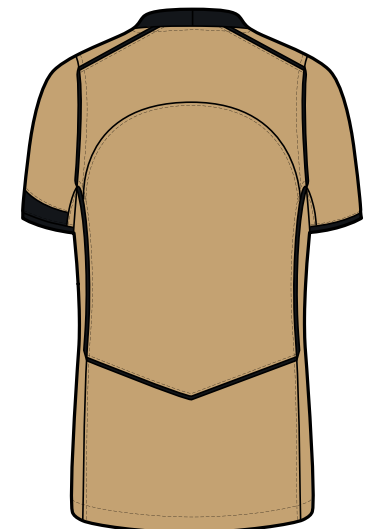
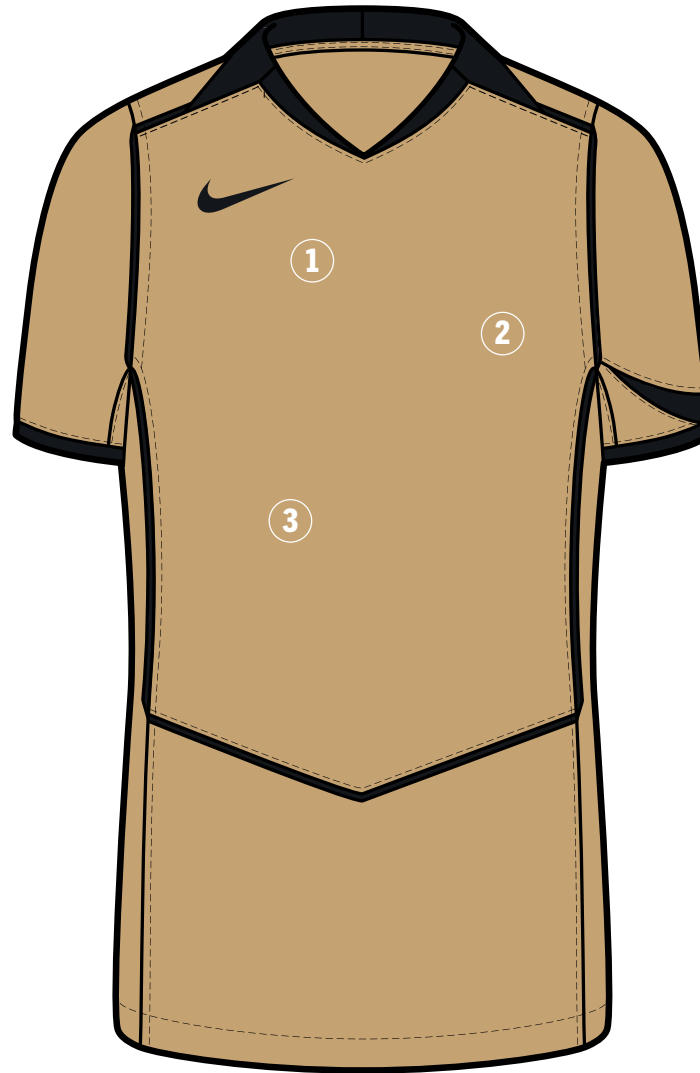


Sustainable Materials

NEW NIKE T90 SS JERSEY

M • IQ8093 W • IQ8096 K • IQ8099

- 1 Iconic Design Line**
Leveraging the branded and licensed teams T90 design line into Team.
- 2 Recycled Materials**
This garment is made with 99% recycled materials through Mechanically Recycled method from PET bottles.
- 3 Performance Fabrics**
Dri-FIT knit fabric on the main body wicks sweat away, while mesh side panels offer breathability where athletes need it most.



 Sustainable Materials
[Nike.com/sustainability](https://nike.com/sustainability)

NEW
NIKE T90 SS JERSEY
\$60.00

FABRIC: 100% polyester. OFFER DATE: 04/01/26 END DATE: 12/31/27

Designed to perform through all 90 minutes of a match, the Total 90 collection became one of the iconic kits of the 2000s thanks to its curving lines, asymmetric designs and mixed materials. • Nike Dri-FIT technology moves sweat away from skin for quicker evaporation, helping athletes stay dry and comfortable. • Lightweight knit fabric has a soft, smooth feel. • Men's and Kids slim fit intent for a tailored look and feel. • Women's not too tight or overly baggy, this top is made with the classic Nike fit your athletes know and love.

- | | | |
|-----------------------------------|--------------------------------|--------------------------------|
| 010 Black/(White) | 100 White/(Wolf Grey) | 341 Gorge Green/(White) |
| 419 College Navy/(White) | 448 Valor Blue/(White) | 480 Game Royal/(White) |
| 657 University Red/(White) | 729 Jersey Gold/(Black) | 891 Team Orange/(White) |



MENS / IQ8093
 SIZES: XS, S, M, L, XL, 2XL, 3XL



WOMENS / IQ8096
 SIZES: XS, S, M, L, XL



KIDS / IQ8099
 SIZES: XS, S, M, L, XL



NEW NIKE REVOLUTION SS JERSEY

M • HV8128 W • HV8133 K • HV8138

- 1 Direct Embroidery Swoosh**
Swoosh execution is embroidered directly onto the garment. The garment will also accept Heat Transfer and Screen Prints.
- 2 Recycled Materials**
This garment is made with 100% recycled materials through Chemically recycled-Textile to textile method.
- 3 1-1 Rib at Neck & Sleeve Construction**
- 4 All Over Print Execution**
This will be a sublimated front panel. It will be placed randomly on the vertical, to optimize usage of material and reduce waste, but will result in subtle variations kit to kit.
- 5 Same Performance Fabrics**
Dri-FIT knit fabric on the front body, back body, and sleeves wicks sweat away, while mesh side panels offer breathability where athletes need it most.
- 6 Fit For All Athletes**
Continuing the new Women's fit, adding more space to the waist, allowing Her to be at Her best. Fit remains consistent for Men and Youth.



 Sustainable Materials
[Nike.com/sustainability](https://www.nike.com/sustainability)

NEW
NIKE REVOLUTION SS JERSEY
\$50.00

FABRIC: 100% polyester. OFFER DATE: 04/01/26 END DATE: 12/31/27

Nike Dri-FIT technology moves sweat away from skin for quicker evaporation, helping athletes stay dry and comfortable. • Mesh panels provide breathability where athletes need it most. • Graphic is randomly placed to help optimize material usage and reduce waste. • This garment is made with at least 75% recycled materials. • Men's and Kids slim fit intent for a tailored look and feel. • Updated women's fit adds more space to the waist.

- 010 Black/White/(White)
- 100 White/Black/(Black)
- 419 College Navy/Game Royal/(White)
- 657 University Red/Team Red/(White)
- 012 Wolf Grey/Anthracite/(Black)
- 354 Hyper Turq/Teal Nebula/(Black)
- 480 Game Royal/College Navy/(White)



MENS / HV8128
 SIZES: XS, S, M, L, XL, 2XL, 3XL



WOMENS / HV8133
 SIZES: XS, S, M, L, XL



KIDS / HV8138
 SIZES: XS, S, M, L, XL



NIKE DRI-FIT STRIKE IV JERSEY

M • FZ9327 W • FZ9329 K • FZ9331

- 1 Direct Embroidery Swoosh**
Swoosh execution is embroidered directly onto the garment. The garment will also accept Heat Transfer and Screen Prints.
- 2 Recycled Materials**
This garment is made with 100% recycled materials.
- 3 Cross Dye Technique**
The body fabric is executed in a cross dyed technique with a horizontal stripe aesthetic through tonal colors.
- 4 Performance Fabrics**
Dri-FIT knit fabric on the front body, back body, and sleeves wicks sweat away, while mesh side panels offer breathability where athletes need it most.
- 5 Fit For All Athletes**
Continuing the new Women's fit, adding more space to the waist, allowing Her to be at Her best. Fit remains consistent for Men and Kids.
- 6 Signifier Language**
A direct one to one link of the EC24 chassis, celebrating the best athletes on the pitch.
- 7 Side Panel Construction**
The side panel is continued from the EC24 chassis which contributes to the efficiency of our patterns, reducing material waste.



 Sustainable Materials
[Nike.com/sustainability](https://nike.com/sustainability)

NIKE DRI-FIT STRIKE IV JERSEY SS US

\$50.00

FABRIC: 100% polyester. **OFFER DATE:** 01/01/25 **END DATE:** 12/31/26

Inspired by what the best players wear on the biggest stages in soccer, Dri-FIT technology works with breathable mesh side panels to help keep athletes cool and composed during fast-paced play. A slim, streamlined fit ensures that nothing comes between your players and the ball. This product is made with 100% recycled polyester fibers. Side panel construction uses a more efficient pattern to help reduce material waste.

(Body / Underarm / Side Panel / Rib / (Swoosh)

- 010 Black with Anthracite Blend / Black / Black / Black / (White)
- 012 Wolf Grey with Pure Platinum Blend / Black / Bright Crimson / Bright Crimson / (White)
- 100 White with Pure Platinum Blend / White / White / White / (Black)
- 354 Hyper Turq with Tropical Twist Blend / Black / Hyper Turq / Hyper Turq / (Black)
- 410 Midnight Navy with Loyal Blue Blend / White / Midnight Navy / Midnight Navy / (White)
- 463 Royal Blue with Sport Blue Blend / White / Royal Blue / Royal Blue / (White)
- 657 University Red with Speed Red Blend / Black / University Red / University Red / (White)



MENS / FZ9327

SIZES: XS, S, M, L, XL, 2XL, 3XL



WOMENS / FZ9329

SIZES: XS, S, M, L, XL, 2XL



KIDS / FZ9331

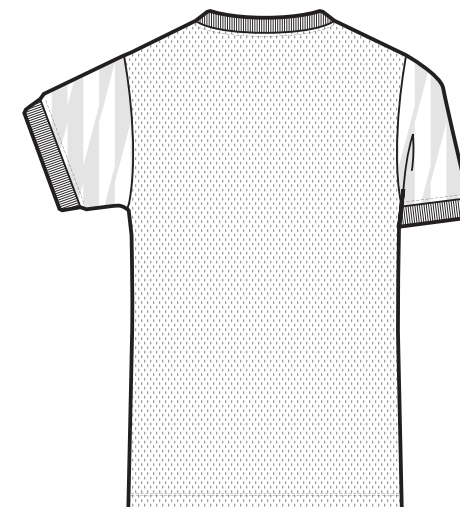
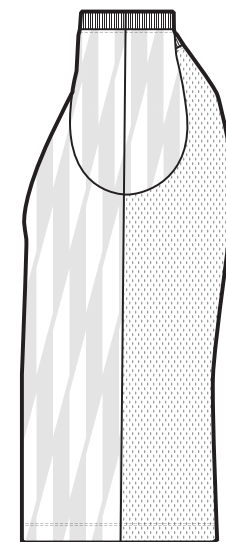
SIZES: XS, S, M, L, XL



NEW NIKE DRI-FIT CHALLENGE VI JERSEY SS

M • HV8141 W • HV8145 K • HV8148

- 1 Direct Embroidery Swoosh**
Swoosh execution is embroidered directly onto the garment. The garment will also accept Heat Transfer and Screen Prints.
- 2 Recycled Materials**
This garment is made with 100% recycled materials.
- 3 All Over Print**
The graphic print is takes inspiration from the vertical engineered language from the 26 elite kits.
- 4 Performance Fabrics**
Dri-FIT knit fabric on the front body, back body, and sleeves wicks sweat away, while mesh side panels offer breathability where athletes need it most.
- 5 Fit For All Athletes**
Continuing the new Women's fit, adding more space to the waist, allowing Her to be at Her best. Fit remains consistent for Men and Youth.
- 6 Print Execution**
This will be a sublimated front panel and sleeves. It will be placed randomly on the vertical, to optimize usage of material and reduce waste, but will result in subtle variations kit to kit.



 Sustainable Materials
[Nike.com/sustainability](https://nike.com/sustainability)

NEW
NIKE DRI-FIT CHALLENGE VI JERSEY SS
\$47.00

FABRIC: 100% polyester. **OFFER DATE:** 01/01/26 **END DATE:** 12/31/27

Nike Dri-FIT technology moves sweat away from skin for quicker evaporation, helping athletes stay dry and comfortable. • Mesh back provides breathability where athletes need it most. • New v-neck design with updated ribbing on collar and sleeves. • All-over print is randomly placed to reduce waste, resulting in variations from jersey to jersey.

- | | | |
|--------------------------------|-----------------------------------|--------------------------------|
| 010 Black/(White) | 012 Wolf Grey/(Black) | 100 White/(Black) |
| 341 Gorge Green/(White) | 419 College Navy/(White) | 448 Valor Blue/(White) |
| 480 Game Royal/(White) | 657 University Red/(White) | 692 Team Maroon/(White) |
| 702 Volt/(Black) | 891 Team Orange/(Black) | |

FIT DETAILS:

MENS • Slim fit intent for a tailored look and feel.

WOMENS • Updated women’s fit adds more space to the waist.

KIDS • Not too tight or overly baggy, this jersey is made with the classic Nike fit your athletes know and love.



MENS / HV8141

SIZES: XS, S, M, L, XL, 2XL, 3XL



WOMENS / HV8145

SIZES: XS, S, M, L, X, 2XL



KIDS / HV8148

SIZES: XS, S, M, L, XL



Sustainable Materials

NIKE DRI-FIT PRECISION VII JERSEY

M • FZ9332 W • FZ9334 K • FZ9336

- 1 Direct Embroidery Swoosh**
Swoosh execution is embroidered directly onto the garment. The garment will also accept Heat Transfer and Screen Prints.
- 2 All Over Print**
The graphic print is shared from the Champions League 24/25 prematch graphic, clashing images of classic sculpture with a D.I.Y zine aesthetic, a rebel celebration of the Nike Goddess.
- 3 Recycled Materials**
This garment is made with 100% recycled materials.
- 4 Performance Fabrics**
Dri-FIT knit fabric on the front body, back body, and sleeves wicks sweat away, while mesh side panels offer breathability where athletes need it most.
- 5 Fit For All Athletes**
Continuing the new Women's fit, adding more space to the waist, allowing Her to be at Her best. Fit remains consistent for Men and Kids.
- 6 Print Execution**
This will be a sublimated front panel and sleeves. It will be placed randomly on the vertical, to optimize usage of material and reduce waste, but will result in subtle variations kit to kit.



 Sustainable Materials
[Nike.com/sustainability](https://nike.com/sustainability)

NIKE DRI-FIT PRECISION VII JERSEY SS US
\$45.00

FABRIC: 100% polyester. **OFFER DATE:** 01/01/25 **END DATE:** 12/31/26

Let your players stand-out in the Nike Precision VII Jersey. Dri-FIT technology pairs with breathable mesh in a slim, streamlined fit to help keep players dry and cool. All-over print is inspired by clashing images of a classic sculpture of the Nike Goddess. This product is made with 100% recycled polyester fibers.

- | | |
|--|--|
| 010 Black/Anthracite/(White) | 100 White/Pure Platinum/(Black) |
| 302 Pine Green/(White) | 410 Midnight Navy/Dark Obsidian/(White) |
| 412 University Blue/Coast/(White) | 448 Valor Blue/Coast/(White) |
| 463 Sport Royal/Royal Blue/(White) | 657 University Red/(White) |
| 677 Team Red/Night Maroon/(White) | 692 Team Maroon/Night Maroon/(White) |
| 702 Volt/Black/(White) | 719 Tour Yellow/University Gold/(Black) |
| 819 Safety Orange/Team Orange/(Black) | |



MENS / FZ9332

SIZES: XS, S, M, L, XL, 2XL, 3XL



WOMENS / FZ9334

SIZES: XS, S, M, L, XL, 2XL



KIDS / FZ9336

SIZES: XS, S, M, L, XL



Sustainable Materials

NEW NIKE DRI-FIT TROPHY VI JERSEY SS

M • HV8151 W • HV8155 K • HV8158

- 1 Direct Embroidery Swoosh**
Swoosh execution is embroidered directly onto the garment. The garment will also accept Heat Transfer and Screen Prints.
- 2 Recycled Materials**
This garment is made with 100% recycled materials.
- 3 1-1 Rib At Cuffs & Raglan Sleeve Construction**
Provides classic sport look with the ability to color block.
- 4 Performance Fabrics**
Dri-FIT knit fabric on the front body, back body, and sleeves wicks sweat away, while mesh side panels offer breathability where athletes need it most.
- 5 Fit For All Athletes**
Continuing the new Women's fit, adding more space to the waist, allowing Her to be at Her best. Fit remains consistent for Men and Youth.



 Sustainable Materials
[Nike.com/sustainability](https://www.nike.com/sustainability)

NEW
NIKE DRI-FIT TROPHY VI JERSEY SS
\$40.00

FABRIC: 100% polyester. **OFFER DATE:** 01/01/26 **END DATE:** 12/31/28

Nike Dri-FIT technology moves sweat away from skin for quicker evaporation, helping athletes stay dry and comfortable. • Mesh back provides breathability where athletes need it most. • Updated raglan sleeve and v-neck design provides the ability to color block.

- | | |
|---|--|
| 010 Black/White/(White) | 101 White/Wolf Grey/(Black) |
| 341 Gorge Green/Pine Green/(White) | 354 Hyper Turq/Chlorine Blue/(Black) |
| 419 College Navy/Photo Blue/(White) | 448 Valor Blue/College Navy/(White) |
| 480 Game Royal/College Navy/(White) | 547 Court Purple/Black/(White) |
| 658 University Red/Team Maroon/(White) | 739 University Gold/Tour Yellow/(Black) |
| 891 Team Orange/Safety Orange/(Black) | |

FIT DETAILS:

MENS • Slim fit intent for a tailored look and feel.

WOMENS • Updated women's fit adds more space to the waist.

KIDS • Not too tight or overly baggy, this jersey is made with the classic Nike fit your athletes know and love.



MENS / HV8151

SIZES: XS, S, M, L, XL, 2XL, 3XL



WOMENS / HV8155

SIZES: XS, S, M, L, X, 2XL



KIDS / HV8158

SIZES: XS, S, M, L, XL



Sustainable Materials

NIKE DRI-FIT STRIPED DIVISION V JERSEY

M • FZ9337 W • FZ9339 K • FZ9341

- 1 Direct Embroidery Swoosh**
Swoosh execution is embroidered directly onto the garment. The garment will also accept Heat Transfer and Screen Prints.
- 2 Recycled Materials**
This garment is made with 100% recycled materials.
- 3 Stripe Pattern**
A staple of football graphic heritage, an update to the classic vertical stripe kit, with slightly wider stripes.
- 4 Performance Fabrics**
The front body, sleeves and lower back are constructed with a Dri-FIT knit combined with a mesh jacquard to offer additional breathability. A mesh upper back panel adds breathability where athletes need it most.
- 5 Fit For All Athletes**
Continuing the new Women's fit, adding more space to the waist, allowing Her to be at Her best. Fit remains consistent for Men and Kids.



 Sustainable Materials
[Nike.com/sustainability](https://nike.com/sustainability)

NIKE STRIPED DIVISION V JERSEY SS US

\$37.00

FABRIC: 100% polyester. **OFFER DATE:** 01/01/25 **END DATE:** 12/31/27

An updated knit construction works with Dri-FIT technology for optimal breathability and comfort. The additional mesh back panel increases airflow, helping your players keep cool as the game heats up. This product is made with 100% recycled polyester fibers.

- | | | |
|---|--|--|
| 010 Black/Anthracite/(White) | 100 White/Black/(White) | 102 White/University Blue/(Black) |
| 105 White/Midnight Navy/(White) | 302 Pine Green/Black/(White) | 463 Royal Blue/Black/(White) |
| 657 University Red/Black/(White) | 739 University Gold/Black/(White) | |



MENS / FZ9337

SIZES: XS, S, M, L, XL, 2XL, 3XL **BODY WIDTH:** 21.25", **BODY LENGTH:** 29.75" (SIZE LARGE)



WOMENS / FZ9339

SIZES: XS, S, M, L, XL, 2XL **BODY WIDTH:** 18.5", **BODY LENGTH:** 26.75" (SIZE MEDIUM)



KIDS / FZ9341

SIZES: XS, S, M, L, XL

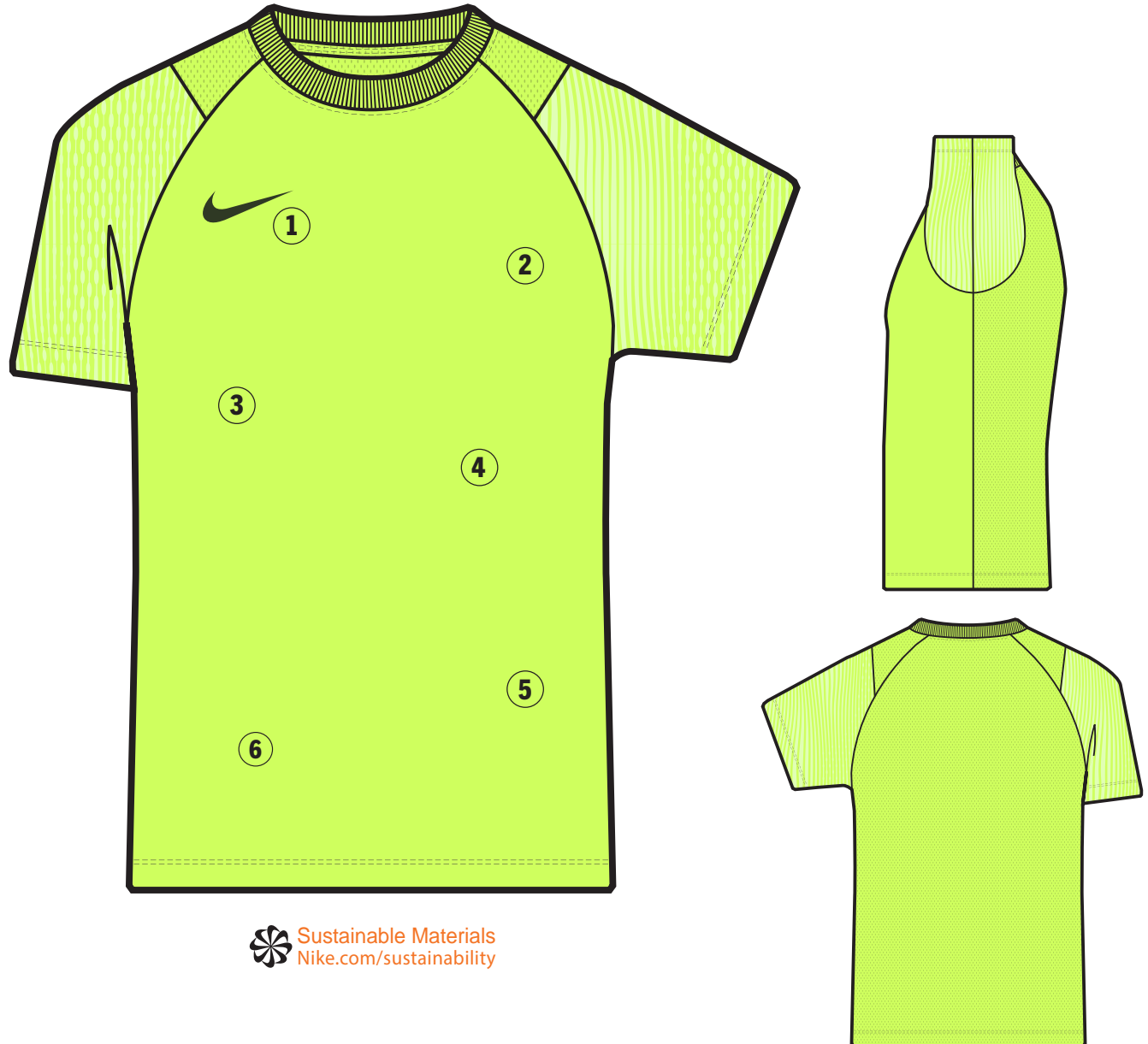


Sustainable Materials

NEW NIKE DRI-FIT ACADEMY II JERSEY SS

M • HV8160 W • HV8164 K • HV8168

- 1 Direct Embroidery Swoosh**
Swoosh execution is embroidered directly onto the garment. The garment will also accept Heat Transfer and Screen Prints.
- 2 Recycled Materials**
This garment is made with 100% recycled materials.
- 3 All Over Print**
The graphic print is shared from the engineered knit language from the elite 26 kits.
- 4 Performance Fabrics**
Dri-FIT knit fabric on the front body, back body, and sleeves wicks sweat away, while mesh side panels offer breathability where athletes need it most.
- 5 Fit For All Athletes**
Continuing the new Women's fit, adding more space to the waist, allowing Her to be at Her best. Fit remains consistent for Men and Youth.
- 6 Print Execution**
This will be a sublimated at the sleeves. It will be placed randomly on the vertical, to optimize usage of material and reduce waste, but will result in subtle variations kit to kit.



 Sustainable Materials
[Nike.com/sustainability](https://nike.com/sustainability)

NEW
NIKE DRI-FIT ACADEMY II JERSEY SS
\$37.00

FABRIC: 100% polyester. **OFFER DATE:** 01/01/26 **END DATE:** 12/31/29

Nike Dri-FIT technology moves sweat away from skin for quicker evaporation, helping athletes stay dry and comfortable. • Mesh back provides breathability where athletes need it most. • Sleeve print is randomly placed to reduce waste, resulting in variations from jersey to jersey.

- | | |
|--|--|
| 010 Black/Anthracite/(White) | 012 Wolf Grey/Neutral Grey/(Black) |
| 105 White/White/(Black) | 341 Gorge Green/Pine Green/(White) |
| 419 College Navy/Mystic Navy/(White) | 480 Game Royal/Royal Blue/(White) |
| 547 Court Purple/Varsity Purple/(White) | 657 University Red/University Red/(White) |
| 692 Team Maroon/University Red/(White) | 702 Volt/Barely Volt/(Black) |
| 739 University Gold/Yellow Strike/(Black) | |

FIT DETAILS:

MENS • Slim fit intent for a tailored look and feel.

WOMENS • Updated women's fit adds more space to the waist.

KIDS • Not too tight or overly baggy, this jersey is made with the classic Nike fit your athletes know and love.



MENS / HV8160
SIZES: XS, S, M, L, XL, 2XL, 3XL, 4XL



WOMENS / HV8164
SIZES: XS, S, M, L, XL, 2XL, 3XL



KIDS / HV8168
SIZES: XS, S, M, L, XL



Sustainable Materials

NIKE DRI-FIT PARK DERBY IV JERSEY SS US
\$32.00

FABRIC: 100% polyester. **OFFER DATE:** 01/01/24 **END DATE:** 12/31/26

Help your teams look and play their best in the Nike Dri-FIT Park Derby IV Jersey. Mesh on the back and underarm panels offer breathability where athletes need it most. Body and sleeves are a Nike Dri-FIT knit fabric that moves sweat away to help keep players dry. This top is made with 100% recycled material. Side panel construction uses a more efficient pattern to help reduce material waste. Slim fit for a tailored feel.

- | | | |
|---|--|-------------------------------------|
| 010 Black/White/(White) | 012 Wolf Grey/Volt/(Black) | 100 White/Wolf Grey/(Black) |
| 419 College Navy/White/(White) | 448 Valor Blue/White/(White) | 480 Game Royal/White/(White) |
| 657 University Red/White/(White) | 739 University Gold/White/(White) | |



MENS / FD7432

SIZES: XS, S, M, L, XL, 2XL, 3XL



WOMENS / FD7437

SIZES: XS, S, M, L, XL, 2XL



KIDS / FD7439

SIZES: XS, S, M, L, XL



Sustainable Materials

NIKE DRI-FIT TIEMPO PREMIER II JERSEY LS US
\$32.00

FABRIC: 100% polyester. OFFER DATE: 01/01/22 END DATE: 12/31/26

The Nike Dri-FIT Tiempo Premier II Jersey brings you the cool performance of sweat-wicking fabric and a mesh back panel kick in when the game heats up.

- 010** Black/White/(White)
- 100** White/White/(Black)
- 419** College Navy/White/(White)
- 480** Game Royal/White/(White)
- 657** University Red/White/(White)



MENS / DH8046

SIZES: S, M, L, XL, 2XL



WOMENS / DH8236

SIZES: XS, S, M, L, XL



KIDS / DH8407

SIZES: XS, S, M, L, XL



Sustainable Materials

NIKE DRI-FIT TIEMPO PREMIER II JERSEY SS US
\$27.00

FABRIC: 100% polyester. OFFER DATE: 01/01/22 END DATE: 12/31/26

The Nike Dri-FIT Tiempo Premier II Jersey brings you the cool performance of sweat-wicking fabric and a mesh back panel kick in when the game heats up.

- | | | |
|---|---------------------------------------|-------------------------------------|
| 010 Black/White/(White) | 012 Wolf Grey/Black/(Black) | 100 White/White/(Black) |
| 341 Gorge Green/White/(White) | 419 College Navy/White/(White) | 448 Valor Blue/White/(White) |
| 480 Game Royal/White/(White) | 547 Court Purple/White/(White) | 616 Vivid Pink/Black/(Black) |
| 657 University Red/White/(White) | 692 Team Maroon/White/(White) | 702 Volt/Black/(Black) |
| 891 Team Orange/Black/(Black) | | |



MENS / DH8044

SIZES: S, M, L, XL, 2XL



WOMENS / DH8235

SIZES: XS, S, M, L, XL



KIDS / DH8390

SIZES: XS, S, M, L, XL



Sustainable Materials

NEW NIKE DRI-FIT PARK VIII JERSEY SS

M • HV8185 W • HV8186 K • HV8188

- 1 Direct Embroidery Swoosh**
Swoosh execution is embroidered directly onto the garment. The garment will also accept Heat Transfer and Screen Prints.
- 2 Recycled Materials**
This garment is made with 100% recycled materials.
- 3 Raglan Sleeves**
Updated sleeve construction from the prior version of the Park jersey.
- 4 Performance Fabrics**
Dri-FIT knit fabric on the front body, back body, and sleeves wicks sweat away, while mesh side panels offer breathability where athletes need it most.
- 5 Fit For All Athletes**
Continuing the new Women's fit, adding more space to the waist, allowing Her to be at Her best. Fit remains consistent for Men and Youth.



 Sustainable Materials
[Nike.com/sustainability](https://www.nike.com/sustainability)

NEW
NIKE DRI-FIT PARK VIII JERSEY SS US
\$22.00

FABRIC: 100% polyester. **OFFER DATE:** 01/01/26 **END DATE:** 12/31/31

Nike Dri-FIT technology moves sweat away from skin for quicker evaporation, helping athletes stay dry and comfortable. • Mesh back provides breathability where athletes need it most. • New raglan sleeve construction updated from the prior Park jersey.

- | | | |
|--------------------------------|------------------------------------|-----------------------------------|
| 010 Black/(White) | 012 Wolf Grey/(Black) | 100 White/(Black) |
| 341 Gorge Green/(White) | 354 Hyper Turq/(Black) | 419 College Navy/(White) |
| 448 Valor Blue/(White) | 480 Game Royal/(White) | 547 Court Purple/(White) |
| 616 Vivid Pink/(Black) | 635 Bright Crimson/(Black) | 657 University Red/(White) |
| 692 Team Maroon/(White) | 702 Volt/(Black) | 719 Tour Yellow/(Black) |
| 729 Jersey Gold/(Black) | 739 University Gold/(Black) | 891 Team Orange/(Black) |

FIT DETAILS:

MENS • Slim fit intent for a tailored look and feel.

WOMENS • Updated women's fit adds more space to the waist.

KIDS • Not too tight or overly baggy, this jersey is made with the classic Nike fit your athletes know and love.



MENS / HV8185

SIZES: XS, S, M, L, XL, 2XL, 3XL



WOMENS / HV8186

SIZES: XS, S, M, L, X, 2XL



KIDS / HV8188

SIZES: XS, S, M, L, XL



Sustainable Materials

NIKE DRI-FIT DIGITAL 24 JERSEY 60D US

M • DR2728 W • DR2730 K • DR2732



NEW WAVY PRINT OPTION AVAILABLE ON 8/1/2025



NEW HOOPS OPTION



CLASSIC HOOPS OPTION



HARLEQUIN OPTION



SOLID OPTION



NEW STRIPES OPTION



CLASSIC STRIPES OPTION



NEW ERA GX3 OPTION



CUSTOMIZE IT

For complete embellishment and pricing options please visit [NIKETEAM.COM](https://www.niketeam.com)



Sustainable Materials
[Nike.com/sustainability](https://www.nike.com/sustainability)

**NIKE DRI-FIT DIGITAL 24 JERSEY 60D US
BLANK \$70.00**

FABRIC: 100% polyester. OFFER DATE: 01/01/23 END DATE: 10/15/27

Dress your squad like their heroes in the Nike Dri-FIT US Digital 24 Jersey. Mesh on the back and side panels offer breathability where athletes need it most. Body and sleeves are a Nike Dri-FIT knit fabric that moves sweat away to help keep players dry. Highly customizable with school and team details. Side and back panel construction use a more efficient pattern to help reduce material waste.

 **CUSTOMIZE IT**
For complete embellishment and pricing options please visit [NIKETEAM.COM](https://www.niketeam.com)



NEW WAVY PRINT OPTION AVAILABLE ON 8/1/2025

 Sustainable Materials

MENS / DR2728

SIZES: S, M, L, XL, 2XL



WOMENS / DR2730

SIZES: S, M, L, XL



KIDS / DR2732

SIZES: XS, S, M, L, XL BODY WIDTH: 15.75", BODY LENGTH: 21.75" (SIZE MEDIUM)



**NIKE DRI-FIT DIGITAL 24 SHORT 60D US
BLANK \$60.00**

FABRIC: 100% polyester. OFFER DATE: 01/01/23 END DATE: 10/15/27

The Nike Dri-FIT US Digital 24 Shorts features sweat-wicking fabric to help keep your players dry and comfortable whether you're training or competing.



CUSTOMIZE IT

For complete embellishment and pricing options please visit [NIKETEAM.COM](https://www.niketeam.com)



MENS / FD8765

SIZES: S, M, L, XL, 2XL HIP WIDTH: 22.25" (SIZE LARGE), INSEAM LENGTH: 8.25" (ALL SIZES)



WOMENS / FD8772

SIZES: S, M, L, XL HIP WIDTH: 21" (SIZE MEDIUM), INSEAM LENGTH: 5.75" (ALL SIZES)



KIDS / FD8774

SIZES: XS, S, M, L, XL HIP WIDTH: 16.75", INSEAM LENGTH: 7" (SIZE MEDIUM)



Sustainable Materials

NIKE DRI-FIT WOVEN VENOM SHORT IV US

\$42.00

FABRIC: Body: 87% polyester/13% spandex. Mesh: 100% polyester.
OFFER DATE: 01/01/24 **END DATE:** 12/31/26

The Nike Dri-FIT Venom IV Shorts are designed for soccer's rising stars. Made with Nike Dri-FIT woven fabric, they wick sweat away from the body with four-way stretch properties for increased range of motion. Mesh inner gusset helps to increase breathability. These shorts are made with at least 75% recycled materials. Side panel construction uses a more efficient pattern to help reduce material waste. Slim fit for a tailored look and feel.

- | | | |
|--------------------------------------|--|---|
| 010 Black/White/(White) | 012 Wolf Grey/Black/(Black) | 100 White/Black/(Black) |
| 302 Pine Green/White/(White) | 419 College Navy/White/(White) | 448 Valor Blue/White/(White) |
| 480 Game Royal/White/(White) | 547 Court Purple/White/(White) | 657 University Red/White/(White) |
| 692 Team Maroon/White/(White) | 739 University Gold/Black/(Black) | |



MENS / FD7442

SIZES: XS, S, M, L, XL, 2XL, 3XL, ST, MT, LT, XLT, 2XLT, 3XLT **INSEAM LENGTH:** 7.75"



WOMENS / FD7471

SIZES: XS, S, M, L, XL, 2XL, XST, ST, MT, LT, XLT, 2XLT **INSEAM LENGTH:** 4.5"



KIDS / FD7473

SIZES: XS, S, M, L, XL **INSEAM LENGTH:** 7" (SIZE MEDIUM)



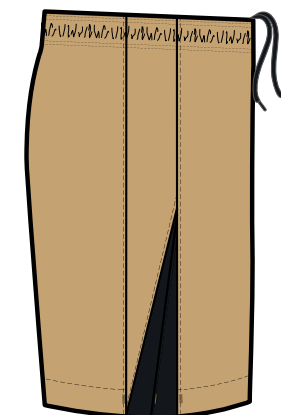
Sustainable Materials

NEW NIKE T90 SHORT

M • IQ8094 W • IQ8098 K • IQ8100

1 Recycled Materials
This garment is made with 99% recycled materials through Mechanically Recycled method from PET bottles.

2 Performance Fabrics
Dri-FIT knit fabric on the main body wicks sweat away, while mesh side panels offer breathability where athletes need it most.



 Sustainable Materials
[Nike.com/sustainability](https://www.nike.com/sustainability)

NEW
NIKE T90 SHORT
\$40.00

FABRIC: 100% polyester. **OFFER DATE:** 04/01/26 **END DATE:** 12/31/27

Designed to perform through all 90 minutes of a match, the Total 90 collection became one of the iconic kits of the 2000s thanks to its curving lines, asymmetric designs and mixed materials. • Nike Dri-FIT technology moves sweat away from skin for quicker evaporation, helping athletes stay dry and comfortable. • Lightweight knit fabric has a soft, smooth feel. • Elastic waistband with drawcord ensures a snug and secure fit. • Men's and Kids slim fit intent for a tailored look and feel. • Women's not too tight or overly baggy, this top is made with the classic Nike fit your athletes know and love.

- | | | |
|-----------------------------------|--------------------------------|--------------------------------|
| 010 Black/(White) | 100 White/(Wolf Grey) | 341 Gorge Green/(White) |
| 419 College Navy/(White) | 448 Valor Blue/(White) | 480 Game Royal/(White) |
| 657 University Red/(White) | 729 Jersey Gold/(Black) | 891 Team Orange/(White) |



MENS / IQ8094
SIZES: XS, S, M, L, XL, 2XL, 3XL



WOMENS / IQ8098
SIZES: XS, S, M, L, XL



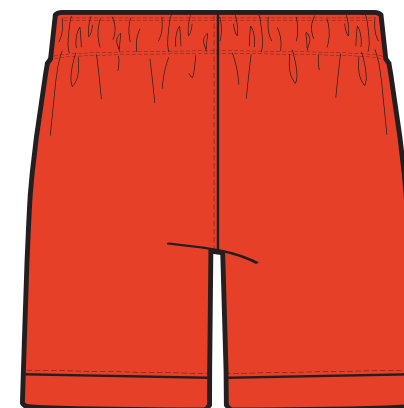
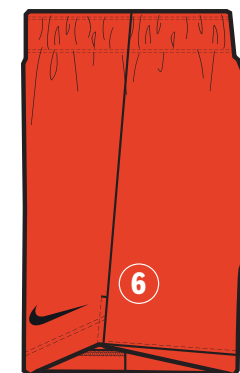
KIDS / IQ8100
SIZES: XS, S, M, L, XL



NEW NIKE DRI-FIT LASER VI SHORT W

M • HV8252 W • HV8253 K • HV8255

- 1 Waistband Construction**
Classic encased elastic waistband construction with internal drawcord.
- 2 Recycled Materials**
This garment is made with 100% recycled materials.
- 3 Performance Fabrics**
Dri-FIT woven fabric construction on the front and back to help wick sweat away from the body.
- 4 Direct Embroidery Swoosh**
Swoosh execution is embroidered directly onto the garment.
- 5 Fit For All Athletes**
The Men's inseam is 7.5", Women's inseam is 5.5", and the Youth inseam grades by size from 7" for a Medium.
- 6 Side Vents At Hem**
Promotes improved mobility.



 Sustainable Materials
[Nike.com/sustainability](https://nike.com/sustainability)



NEW
NIKE DRI-FIT LASER VI SHORT W US
\$32.00

FABRIC: 100% polyester. OFFER DATE: 01/01/26 END DATE: 12/31/28

Nike Dri-FIT technology moves sweat away from skin for quicker evaporation, helping athletes stay dry and comfortable. •Elastic waistband with drawcord ensures a snug and secure fit. •Side vents at hem helps improve mobility. •The new design gives a more classic sport look with an option of contrast color blocking at the hem.

- | | | |
|--------------------------------|------------------------------------|-----------------------------------|
| 010 Black/(White) | 012 Wolf Grey/(Black) | 100 White/(Black) |
| 341 Gorge Green/(White) | 354 Hyper Turq/(Black) | 419 College Navy/(White) |
| 480 Game Royal/(White) | 616 Vivid Pink/(Black) | 657 University Red/(White) |
| 692 Team Maroon/(White) | 739 University Gold/(Black) | 891 Team Orange/(Black) |

FIT DETAILS:

MENS • Slim fit intent for a tailored look and feel.

WOMENS • Not too tight or overly baggy, these shorts are made with the classic Nike fit your athletes know and love.

KIDS • Not too tight or overly baggy, these shorts are made with the classic Nike fit your athletes know and love.



MENS / HV8252

SIZES: XS, S, M, L, XL, 2XL, 3XL INSEAM LENGTH: 7.5"



WOMENS / HV8253

SIZES: XS, S, M, L, XL INSEAM LENGTH: 5.5"



KIDS / HV8255

SIZES: XS, S, M, L, XL INSEAM LENGTH: 7" (SIZE MEDIUM)



Sustainable Materials

NIKE DRI-FIT LEAGUE KNIT III SHORT US

\$29.00

FABRIC: 100% polyester. **OFFER DATE:** 01/01/23 **END DATE:** 12/31/26

Round out your game-day uniform with the Nike League Shorts, made from lightweight sweat-wicking fabric that helps you stay dry on the field. With mesh insets and a slim, streamlined fit, they keep the air flowing and distractions low so you can focus on the ball. Embroidered Swoosh design trademark. Elastic waistband with drawcord.

- | | | |
|--|--------------------------------------|---|
| 010 Black/White/(White) | 012 Wolf Grey/Black/(Black) | 100 White/Black/(Black) |
| 341 Gorge Green/White/(White) | 354 Hyper Turq/White/(White) | 419 College Navy/White/(White) |
| 448 Valor Blue/White/(White) | 480 Game Royal/White/(White) | 657 University Red/White/(White) |
| 739 University Gold/Black/(Black) | 891 Team Orange/Black/(Black) | |



MENS / DR0961

SIZES: S, M, L, XL, 2XL **INSEAM LENGTH:** 8"



WOMENS / DR0965

SIZES: XS, S, M, L, XL **INSEAM LENGTH:** 4"



KIDS / DR0969

SIZES: XS, S, M, L, XL **INSEAM LENGTH:** 7" (SIZE MEDIUM)



Sustainable Materials

NIKE DRI-FIT CLASSIC III KNIT SHORT US

\$24.00

FABRIC: 100% polyester. **OFFER DATE:** 01/01/25 **END DATE:** 12/31/28

The Classic III shorts are made with Dri-FIT knit fabric and a mesh leg opening to keep players dry and moving comfortably. Elastic waistband with drawcord helps ensure a snug and secure fit through 90 minutes. This product is made with 100% recycled polyester fibers. Dye process reduces the water and energy usage by over 50%.

- | | | |
|--|--------------------------------------|--|
| 010 Black/White/(White) | 012 Wolf Grey/Black/(Black) | 100 White/Black/(Black) |
| 302 Pine Green/White/(White) | 341 Gorge Green/White/(White) | 410 Midnight Navy/White/(White) |
| 412 University Blue/White/(White) | 463 Royal Blue/White/(White) | 547 Court Purple/White/(White) |
| 657 University Red/White/(White) | 677 Team Red/White/(White) | 702 Volt/Black/(Black) |
| 739 University Gold/Black/(Black) | | |



MENS / FZ9368

SIZES: S, M, L, XL, 2XL **INSEAM LENGTH:** 8.25"



WOMENS / FZ9371

SIZES: S, M, L, XL, 2XL **INSEAM LENGTH:** 4"



KIDS / FZ9374

SIZES: XS, S, M, L, XL **INSEAM LENGTH:** 7" (SIZE MEDIUM)



Sustainable Materials

NIKE DRY PARK III SHORT NB

\$20.00

FABRIC: 100% polyester. OFFER DATE: 04/01/20 END DATE: 12/31/31

Dri-FIT angled side seam short (slim fit) with soft hand feel updated fit for better mobility/comfort.

- | | | |
|--------------------------------|------------------------------------|-----------------------------------|
| 010 Black/(White) | 012 Wolf Grey/(Black) | 100 White/(Black) |
| 341 Gorge Green/(White) | 354 Hyper Turq/(Black) | 419 College Navy/(White) |
| 448 Valor Blue/(White) | 480 Game Royal/(White) | 547 Court Purple/(White) |
| 617 Vivid Pink/(Black) | 635 Bright Crimson/(Black) | 657 University Red/(White) |
| 692 Team Maroon/(White) | 702 Volt/(Black) | 719 Tour Yellow/(Black) |
| 729 Jersey Gold/(Black) | 739 University Gold/(Black) | 891 Team Orange/(Black) |



MENS / BV6857

SIZES: S, M, L, XL HIP WIDTH: 20.5" (SIZE LARGE), INSEAM LENGTH: 9" (ALL SIZES)



WOMENS / BV6862

SIZES: XS, S, M, L, XL HIP WIDTH: 21.5", INSEAM LENGTH: 3.4" (SIZE MEDIUM)



KIDS / BV6866

SIZES: XS, S, M, L, XL HIP WIDTH: 17.5", INSEAM LENGTH: 7" (SIZE MEDIUM)



Sustainable Materials

NIKE STRIKE KH - WC22 TEAM
FQ8253 \$20.00

Sold in prepacks of 6.

SIZES: XS, S, M, L, XL FABRIC: 100% textile.
 OFFER DATE: 04/01/24

- | | |
|---|---|
| 010 Black/Anthracite/(White) | 100 White/(Black) |
| 302 Pine Green/Gorge Green/Black/(White) | 329 Green Spark/(Black) |
| 354 Hyper Turq/(Black) | 410 Midnight Navy/(White) |
| 412 University Blue/Italy Blue/(Midnight Navy) | 463 Royal Blue/Midnight Navy/(White) |
| 477 Team Royal/(White) | 510 Hyper Grape/Black/(Jersey Gold) |
| 635 Bright Crimson/(Black) | 639 Hyper Pink/(Black) |
| 657 University Red/Gym Red/(White) | 702 Volt/(Black) |
| 719 Tour Yellow/University Gold/(Black) | 891 Team Orange/(Black) |



NIKE ACADEMY OTC - TEAM 132
SX5728 \$12.00

Sold in prepacks of 6.

SIZES: XS, S, M, L, XL FABRIC: 100% textile.

The Nike Classic 2 Sock is designed with a dynamic arch and lightweight cushioning for a supportive fit and feel during play. • Dri-FIT technology helps keep feet dry and comfortable. • Cushioning in high-wear areas helps absorb impact. • Dynamic arch provides a supportive fit and feel. • Anatomical left and right socks are designed for a natural fit.

- | | | |
|------------------------------------|--------------------------------|-----------------------------------|
| 010 Black/(White) | 018 Wolf Grey/(Black) | 100 White/(Black) |
| 302 Pine Green/(White) | 303 Hyper Turq/(Black) | 323 Gorge Green/(White) |
| 410 College Navy/(White) | 448 Valor Blue/(White) | 460 Game Royal/(White) |
| 545 Court Purple/(White) | 616 Vivid Pink/(Black) | 648 University Red/(White) |
| 677 Team Maroon/(White) | 702 Volt/(Black) | 719 Tour Yellow/(Black) |
| 739 University Gold/(Black) | 729 Jersey Gold/(Black) | 817 Team Orange/(White) |
| 891 Team Orange/(Black) | | |



**NIKE VAPOR STRIKE KNEE-HIGH SOCCER SOCKS
DH6619 \$38.00**

SIZES: 1, 2, 3, 4, 5, 6
FABRIC: 89% polyester/7% spandex/4% nylon.

Performance on another level. Anti-slip yarns keep your feet secure in your cleats with NikeGrip technology. Sweat-wicking technology keeps your feet dry and comfortable from the first minute of your match to the 90th. Nike Dri-FIT technology moves sweat away from your skin for quicker evaporation, helping you stay dry and comfortable. Cushioning in high traction areas provides optimal comfort.

010 Black/White **100** White/Black



**NIKEGRIP VAPOR STRIKE SOCCER CREW SOCKS
DH6613 \$30.00**

SIZES: 1, 2, 3, 4, 5, 6
FABRIC: 86% polyester/9% spandex/5% nylon.
OFFER DATE: 04/01/24

Play and practice with confidence—just like your idols on the big stage. Gripping technology helps to keep your foot from sliding around in your cleat, and sweat-wicking technology keeps you dry and comfortable from start to finish of your game. NikeGrip technology helps keep your foot from sliding inside your cleat. Nike Dri-FIT technology moves sweat away from your skin for quicker evaporation, helping you stay dry and comfortable.

010 Black/White **100** White/Black



**NIKE VAPOR STRIKE SOCCER LEG SLEEVE
DH6616 \$22.00**

SIZES: S/M, L/XL

Be comfortable while practicing and playing on the pitch. With sweat-wicking technology designed to keep you dry from start to finish, this leg sleeve fits over your shin guard to keep you match ready any time. Nike Dri-FIT technology moves sweat away from your skin for quicker evaporation, helping you stay dry and comfortable. Ribbed design stretches for a secure fit.

010 Black/White **100** White/Black



NIKE STRIKE CREW SOCKS
FZ8485 \$16.00

SIZES: XS, S, M, L, XL
FABRIC: 84% polyester/10% cotton/6% spandex.

These Nike Strike socks have cushioning in high-wear areas to help keep you comfortable wherever your day takes you.

- | | | |
|-----------------------------|---------------------------------|--------------------------------|
| 010 Black/White | 100 White/Black | 410 Midnight Navy/White |
| 463 Royal Blue/White | 657 University Red/White | |

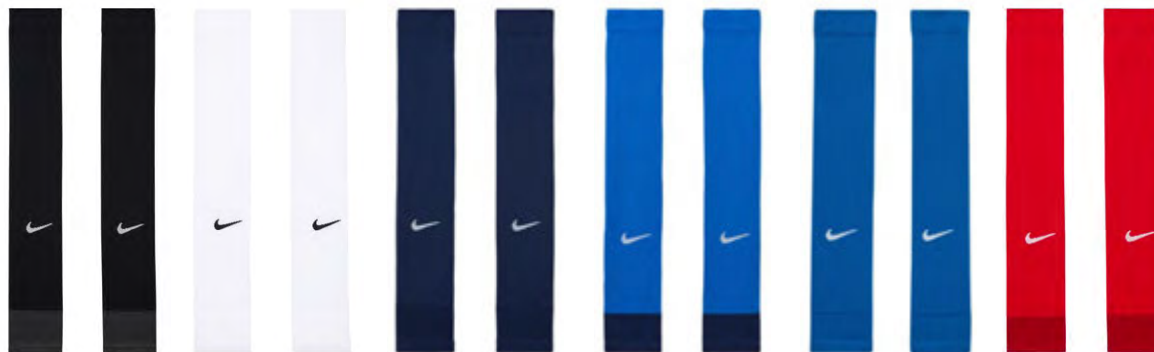


NIKE STRIKE DRI-FIT SOCCER SLEEVE
FQ8282 \$12.00

SIZES: S/M, L/XL
FABRIC: 94% polyester/6% spandex.

Stay dry and comfortable while you're on the pitch. Made with sweat-wicking material that does just that, the Nike Strike Soccer Sleeve also fits comfortably over your shin guard so you can show off your soccer fandom while you play. Nike Dri-FIT technology moves sweat away from your skin for quicker evaporation, helping you stay dry and comfortable. Stretch design fits comfortably over your shin guard.

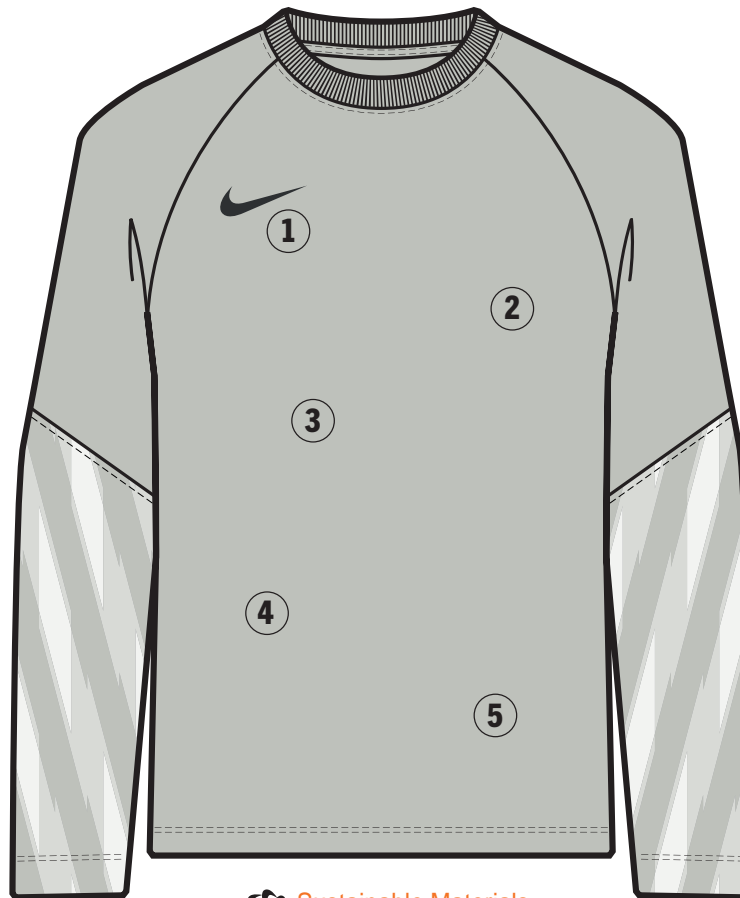
- | | | |
|---|-----------------------------|---|
| 010 Black/Anthracite/White | 100 White/Black | 410 Midnight Navy/White |
| 463 Royal Blue/Midnight Navy/White | 477 Team Royal/White | 657 University Red/Gym Red/White |



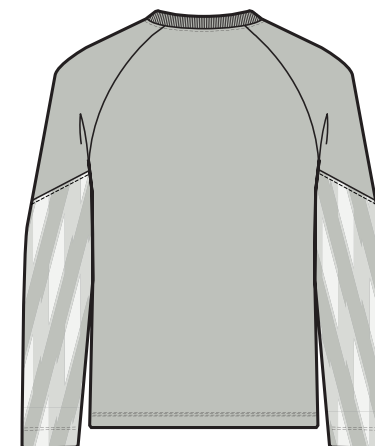
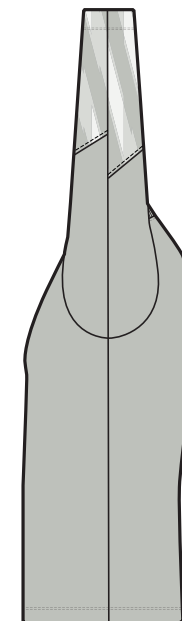
NEW NIKE DRI-FIT PARK V GK JERSEY LS

M • HV8314 W • HV8316 K • HV8318

- 1 Direct Embroidery Swoosh**
Swoosh execution is embroidered directly onto the garment. The garment will also accept Heat Transfer and Screen Prints.
- 2 Recycled Materials**
This garment is made with 100% recycled materials.
- 3 Print Execution**
This will be a sublimated on the lower half of the sleeves. It will be placed randomly on the vertical, to optimize usage of material and reduce waste, but will result in subtle variations kit to kit.
- 4 Performance Fabrics**
Dri-FIT fabric on the main body wicks away sweat and eliminates on-field distractions.
- 5 Fit For All Athletes**
Continuing the new Women's fit, adding more space to the waist, allowing Her to be at Her best. Fit remains consistent for Men and Youth.



 Sustainable Materials
[Nike.com/sustainability](https://nike.com/sustainability)



NEW
NIKE DRI-FIT PARK V GK JERSEY LS
\$42.00

FABRIC: 100% polyester. OFFER DATE: 01/01/26 END DATE: 12/31/31

Nike Dri-FIT technology moves sweat away from skin for quicker evaporation, helping athletes stay dry and comfortable. • Updated raglan sleeve construction from the prior version. • Sleeve print is randomly placed to reduce waste, resulting in variations from jersey to jersey.

- 010 Black/(White)
- 097 Grey Fog/(Black)
- 507 Wild Grape/(White)
- 645 Hyper Pink/(White)

FIT DETAILS:

MENS • Slim fit intent for a tailored look and feel.

WOMENS • Updated women's fit adds more space to the waist.

KIDS • Not too tight or overly baggy, this jersey is made with the classic Nike fit your athletes know and love.



MENS / HV8314

SIZES: XS, S, M, L, XL, 2XL, 3XL



WOMENS / HV8316

SIZES: XS, S, M, L, X, 2XL



KIDS / HV8318

SIZES: XS, S, M, L, XL



Sustainable Materials

NIKE DRY PARK III SHORT NB

\$20.00

FABRIC: 100% polyester. OFFER DATE: 04/01/20 END DATE: 12/31/31

Dri-FIT angled side seam short (slim fit) with soft hand feel updated fit for better mobility/comfort.

- 010** Black/(White)
- 012** Wolf Grey/(Black)
- 547** Court Purple/(White)
- 617** Vivid Pink/(Black)



MENS / BV6857

SIZES: S, M, L, XL, 2XL HIP WIDTH: 20.5" (SIZE LARGE), INSEAM LENGTH: 9" (ALL SIZES)



WOMENS / BV6862

SIZES: XS, S, M, L, XL HIP WIDTH: 19.7" (SIZE MEDIUM), INSEAM LENGTH: 3.4" (ALL SIZES)



KIDS / BV6866

SIZES: XS, S, M, L, XL HIP WIDTH: 16.9", INSEAM LENGTH: 7" (SIZE MEDIUM)

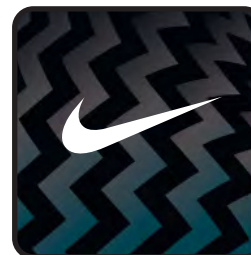


NEW NIKE DRI-FIT GARDIEN VI GK JERSEY LS

M • HV8311 W • HV8312 K • HV8313

- 1 Direct Embroidery Swoosh**
Swoosh execution is embroidered directly onto the garment. The garment will also accept Heat Transfer and Screen Prints.
- 2 Recycled Materials**
This garment is made with 100% recycled materials.
- 3 All Over Print**
The graphic print takes visual elements from the 26 elite GK jersey.
- 4 Performance Fabrics**
Dri-FIT knit fabric on the main body wicks sweat away, while knit fabric sleeves add durability where Keepers need it most.
- 5 Fit For All Athletes**
Continuing the new Women's fit, adding more space to the waist, allowing Her to be at Her best. Fit remains consistent for Men and Youth.
- 6 Print Execution**
This will be a sublimated front and back panels and sleeves. It will be placed randomly on the vertical, to optimize usage of material and reduce waste, but will result in subtle variations kit to kit.
- 7 Signifier Language**
A direct one to one link of the WC26 Chassis, celebrating the best athletes on the pitch.

COMING SOON



ENGINEERED
TO THE EXACT SPECIFICATIONS
OF CHAMPIONSHIP ATHLETES

TEAM

SOCCER

NEW
NIKE DRI-FIT GARDIEN VI GK JERSEY LS US
\$82.00

FABRIC: Body: 100% polyester. Panels: 91% polyester/9% spandex.
OFFER DATE: 01/01/26 **END DATE:** 12/31/27

Nike Dri-FIT technology moves sweat away from skin for quicker evaporation, helping athletes stay dry and comfortable. • Endure knit fabric on the sleeves helps add durability. • Spandex-blend panels help increase range of motion for stretch saves.

- | | | |
|-------------------------------|----------------------------------|-------------------------------|
| 010 Black/(White) | 329 Stadium Green/(White) | 507 Wild Grape/(White) |
| 644 Hyper Pink/(White) | 719 Lightening/(Black) | |

FIT DETAILS:
MENS • Slim fit intent for a tailored look and feel.
WOMENS • Updated women's fit adds more space to the waist.
KIDS • Not too tight or overly baggy, this jersey is made with the classic Nike fit your athletes know and love.



MENS / HV8311
SIZES: XS, S, M, L, XL, 2XL, 3XL



WOMENS / HV8312
SIZES: XS, S, M, L, X, 2XL



KIDS / HV8313
SIZES: XS, S, M, L, XL



NIKE DRY PARK III SHORT NB

\$20.00

FABRIC: 100% polyester. OFFER DATE: 04/01/20 END DATE: 12/31/31

Dri-FIT angled side seam short (slim fit) with soft hand feel updated fit for better mobility/comfort.

- 010** Black/(White)
- 341** Gorge Green/(White)
- 547** Court Purple/(White)
- 617** Vivid Pink/(Black)
- 719** Tour Yellow/(Black)



MENS / BV6857

SIZES: S, M, L, XL, 2XL HIP WIDTH: 20.5" (SIZE LARGE), INSEAM LENGTH: 9" (ALL SIZES)



WOMENS / BV6862

SIZES: XS, S, M, L, XL HIP WIDTH: 19.7" (SIZE MEDIUM), INSEAM LENGTH: 3.4" (ALL SIZES)



KIDS / BV6866

SIZES: XS, S, M, L, XL HIP WIDTH: 16.9", INSEAM LENGTH: 7" (SIZE MEDIUM)



Sustainable Materials

**NIKE DRI-FIT PAD GARDIEN I GOALKEEPER
COMPRESSION TIGHT
\$72.00**

FABRIC: 100% polyester. OFFER DATE: 01/01/22 END DATE: 12/31/27

010 Black/Black/(White)



MENS / CV0045

SIZES: S, M, L, XL, 2XL



WOMENS / CV0048

SIZES: XS, S, M, L, XL



KIDS / CV0050

SIZES: XS, S, M, L, XL



Sustainable Materials

**NIKE DRI-FIT PAD GARDIEN I GOALKEEPER
COMPRESSION SHORT
\$67.00**

FABRIC: 100% polyester. OFFER DATE: 01/01/22 END DATE: 12/31/27

010 Black/Black/(White)



MENS / CVO053

SIZES: S, M, L, XL, 2XL



WOMENS / CVO055

SIZES: XS, S, M, L, XL INSEAM LENGTH: 5.25" (SIZE MEDIUM)



KIDS / CVO057

SIZES: XS, S, M, L, XL INSEAM LENGTH: 5" (SIZE MEDIUM)



Sustainable Materials

NEW
NIKE DRI-FIT REFEREE III JERSEY SS
\$80.00

FABRIC: 100% polyester. **OFFER DATE:** 04/01/26 **END DATE:** 12/31/29

The Nike Dri-FIT Jersey is made with sweat-wicking fabric to help keep you cool and comfortable, and 2 large pockets offer plenty of room for pens, penalty cards, and more.

010 Black/Black/(White)

702 Volt/Black/(Black)



MENS / HV8319

SIZES: S, M, L, XL, 2XL



WOMENS / HV8321

SIZES: XS, S, M, L, XL, 2XL



Sustainable Materials

NEW
NIKE DRI-FIT REFEREE III SHORT
\$55.00

FABRIC: 100% polyester. **OFFER DATE:** 04/01/26 **END DATE:** 12/31/29

The Nike Dri-FIT Shorts are made with sweat-wicking fabric to help keep you cool and comfortable for the full 90 minutes.

010 Black/(White)



MENS / HV8330

SIZES: S, M, L, XL, 2XL **INSEAM LENGTH:** 8.25"



WOMENS / HV8332

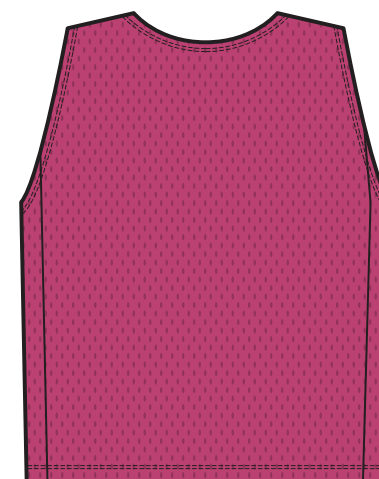
SIZES: XS, S, M, L, XL **INSEAM LENGTH:** 6"



NEW NIKE DRI-FIT TRAINING BIB 26

UNISEX • HV8429

- 1 Direct Embroidery Swoosh**
Swoosh execution is a #7 heat transfer.
- 2 Recycled Materials**
This garment is made with 100% recycled materials.
- 3 Performance Fabrics**
Constructed with a Dri-FIT knit fabric, to help wick sweat away from the body.



 Sustainable Materials
[Nike.com/sustainability](https://nike.com/sustainability)



NEW
UNISEX NIKE DRI-FIT TRAINING BIB 26
\$11.00

FABRIC: 100% polyester. OFFER DATE: 01/01/26 END DATE: 12/31/31

-
- | | | |
|-------------------------------|---------------------------------|-------------------------------|
| 100 White/(Black) | 315 Action Green/(Black) | 406 Photo Blue/(Black) |
| 616 Vivid Pink/(Black) | 702 Volt/(Black) | |

UNISEX / HV8429

SIZES: XS, S, M, L, XL



NEW NIKE DRI-FIT STRIKE 26 TRACK JACKET K

M • HV8407 W • HV8409 K • HV8411

- 1 Heat Transfer Swoosh**
Swoosh execution is a high density heat transfer. The garment will also accept Direct Embroidery and Screen Prints.
- 2 Recycled Materials**
This garment is made with 100% recycled materials.
- 3 Performance Fabrics**
Constructed with a Dri-FIT knit fabric, to help wick sweat away from the body.
- 4 Secure Storage**
Two zippered side seam pockets offer plenty of secure storage options.
- 5 Color Blocking**
Color blocked inserts down the exterior of the sleeves provide a classic training look.
- 6 Rib At Cuffs And Collar**
Rib at the cuffs and collar help keep this track jacket in place.



 Sustainable Materials
[Nike.com/sustainability](https://www.nike.com/sustainability)



NEW
NIKE DRI-FIT STRIKE 26 TRACK JACKET K
\$85.00

FABRIC: 100% polyester. **OFFER DATE:** 01/01/26 **END DATE:** 12/31/27

Nike Dri-FIT technology moves sweat away from skin for quicker evaporation, helping athletes stay dry and comfortable. • Two zippered side pockets offer plenty of secure storage options. • Lightweight knit fabric has a soft, smooth feel. • Rib at the cuffs and collar help keep this jacket in place.

- | | |
|---|---|
| 010 Black/Wolf Grey/(White) | 329 Green Spark/Wolf Grey/(White) |
| 410 Midnight Navy/Royal Blue/(White) | 463 Royal Blue/Midnight Navy/(White) |
| 657 University Red/Black/(White) | |

FIT DETAILS:

MENS • Slim fit intent for a tailored look and feel.

WOMENS • Not too tight or overly baggy, this jacket is made with the classic Nike fit your athletes know and love.

KIDS • Not too tight or overly baggy, this jacket is made with the classic Nike fit your athletes know and love.



CLOSE UP VIEW OF PIPING COLORS (BACK VIEW)



MENS / HV8407

SIZES: XS, S, M, L, XL, 2XL, 3XL



WOMENS / HV8409

SIZES: XS, S, M, L, X, 2XL



KIDS / HV8411

SIZES: XS, S, M, L, XL



Sustainable Materials

NEW NIKE DRI-FIT STRIKE 26 DRILL TOP K

M • HV8373 W • HV8379 K • HV8383

- 1 Heat Transfer Swoosh**
Swoosh execution is a high density heat transfer. The garment will also accept Direct Embroidery and Screen Prints.
- 2 Recycled Materials**
This garment is made with 100% recycled materials.
- 3 Side Panel**
Mesh side panels provide breathability where athletes need it most.
- 4 Signifier Language**
A link to the WC26 Chassis signifier and piping, celebrating the best athletes on the pitch.
- 5 Performance Fabrics**
Dri-FIT knit fabric on the main body wicks sweat away, while mesh side panels and sleeve inserts provide breathability where athletes need it most.
- 6 Fit For All Athletes**
Continuing the new Women's fit, adding more space to the waist, allowing Her to be at Her best. Fit remains consistent for Men and Youth.



 Sustainable Materials
[Nike.com/sustainability](https://nike.com/sustainability)



NEW
NIKE DRI-FIT STRIKE 26 DRILL TOP K
\$75.00

FABRIC: 91% polyester/9% spandex. **OFFER DATE:** 01/01/26 **END DATE:** 12/31/27

Nike Dri-FIT technology moves sweat away from skin for quicker evaporation, helping athletes stay dry and comfortable. • Mesh panels provide breathability where athletes need it most. • Lightweight knit fabric has a soft, smooth feel.

- | | |
|---|---|
| 010 Black/Wolf Grey/(White) | 329 Green Spark/Wolf Grey/(White) |
| 410 Midnight Navy/Royal Blue/(White) | 463 Royal Blue/Midnight Navy/(White) |
| 657 University Red/Black/(White) | |

FIT DETAILS:
MENS • Slim fit intent for a tailored look and feel.
WOMENS • Updated women's fit adds more space to the waist.
KIDS • Not too tight or overly baggy, this top is made with the classic Nike fit your athletes know and love.



CLOSE UP VIEW OF PIPING COLORS



MENS / HV8373

SIZES: XS, S, M, L, XL, 2XL, 3XL



WOMENS / HV8379

SIZES: XS, S, M, L, X, 2XL



KIDS / HV8383

SIZES: XS, S, M, L, XL

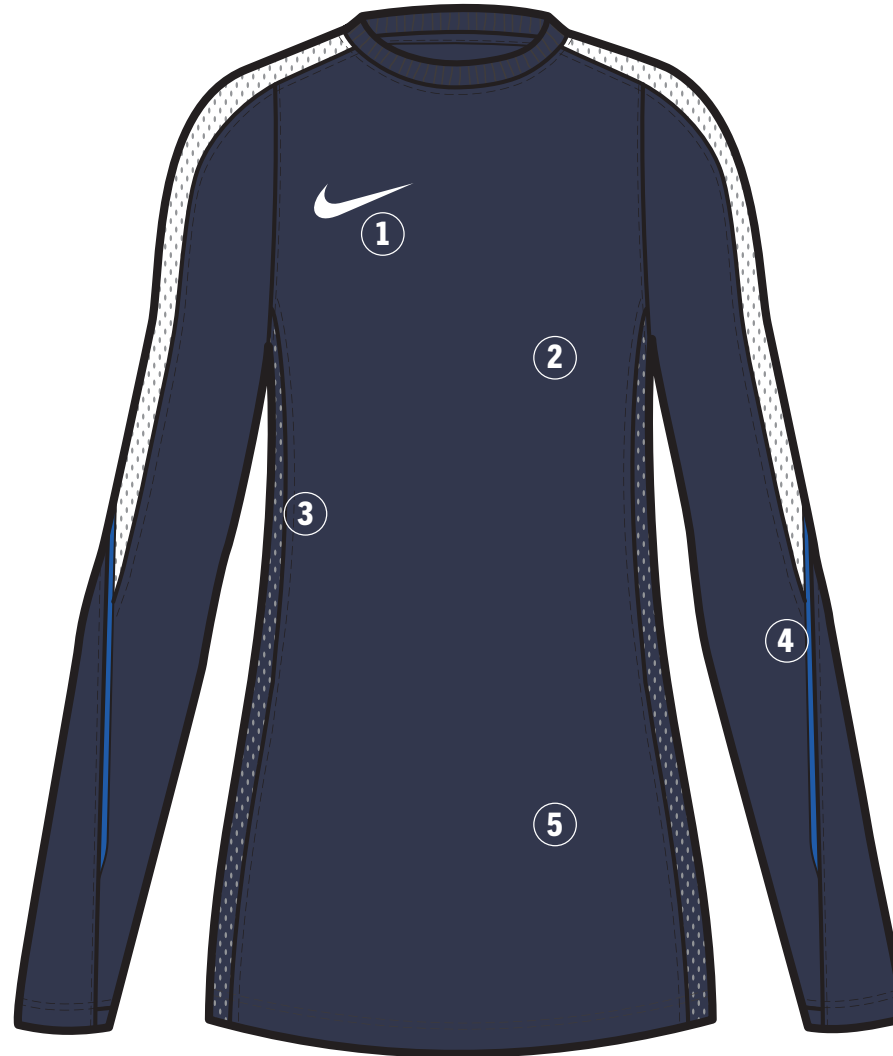


Sustainable Materials

NEW NIKE DRI-FIT STRIKE 26 CREW TOP

W • HV8367

- 1 Heat Transfer Swoosh**
Swoosh execution is a high density heat transfer. The garment will also accept Direct Embroidery and Screen Prints.
- 2 Recycled Materials**
This garment is made with 100% recycled materials.
- 3 Side Panel**
Mesh side panels provide breathability where athletes need it most.
- 4 Signifier Language**
A link to the WC26 Chassis signifier and piping, celebrating the best athletes on the pitch.
- 5 Performance Fabrics**
Dri-FIT knit fabric on the main body wicks sweat away, while mesh side panels and sleeve inserts provide breathability where athletes need it most.



 Sustainable Materials
[Nike.com/sustainability](https://nike.com/sustainability)

NEW
NIKE DRI-FIT STRIKE 26 CREW TOP K
\$75.00

FABRIC: 91% polyeste/9% spandex. OFFER DATE: 01/01/26 END DATE: 12/31/27

Nike Dri-FIT technology moves sweat away from skin for quicker evaporation, helping athletes stay dry and comfortable. • Mesh panels provide breathability where athletes need it most. • Lightweight knit fabric has a soft, smooth feel. • Updated women's fit adds more space to the waist.

- 010** Black/Wolf Grey/(White)
- 410** Midnight Navy/Royal Blue/(White)
- 657** University Red/Black/(White)
- 329** Green Spark/Wolf Grey/(White)
- 463** Royal Blue/Midnight Navy/(White)



CLOSE UP VIEW OF PIPING COLORS



WOMENS / HV8367

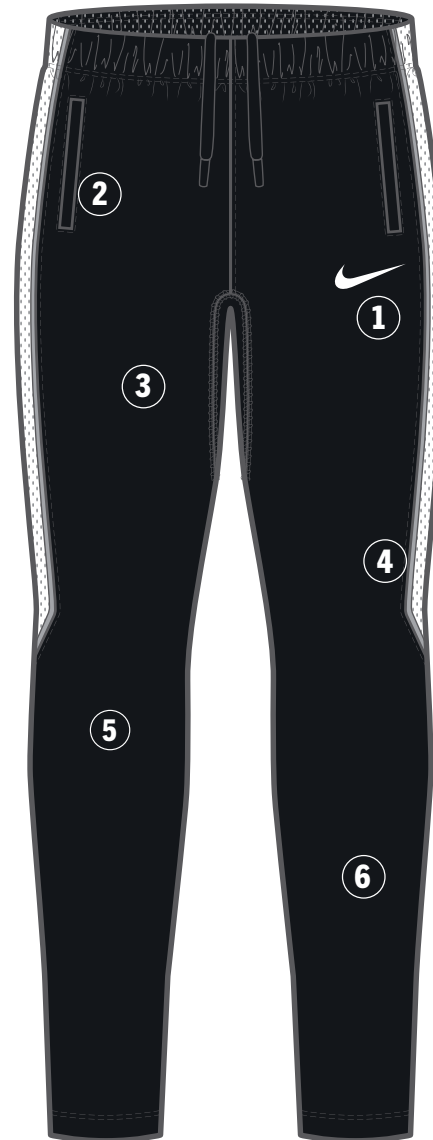
SIZES: XS, S, M, L, XL, 2XL



NEW NIKE DRI-FIT STRIKE 26 PANT KPZ

M • HV8386 W • HV8393 K • HV8395

- 1 Heat Transfer Swoosh**
Swoosh execution is a high density heat transfer. The garment will also accept Direct Embroidery and Screen Prints.
- 2 Secure Storage**
Two zippered side seam pockets offer secure storage options.
- 3 Recycled Materials**
This garment is made with 100% recycled materials.
- 4 Signifier Language**
A link to the WC26 Chassis signifier and piping, celebrating the best athletes on the pitch.
- 5 Performance Fabrics**
Dri-FIT knit fabric on the main body wicks sweat away, while mesh side panels and sleeve inserts provide breathability where athletes need it most.
- 6 Fit For All Athletes**
Continuing the new Women's fit, adding more space to the waist, allowing Her to be at Her best. Fit remains consistent for Men and Youth.
- 7 Zippers**
Zippers at the leg opening provide ease of on/off.



 Sustainable Materials
[Nike.com/sustainability](https://nike.com/sustainability)

NEW
NIKE DRI-FIT STRIKE 26 PANT KPZ
\$75.00

FABRIC: Body: 91% polyester/9% spandex. Pocket Bags: 100% polyester.
OFFER DATE: 01/01/26 **END DATE:** 12/31/27

Nike Dri-FIT technology moves sweat away from skin for quicker evaporation, helping athletes stay dry and comfortable. • Two zippered side pockets offer plenty of secure storage options. • Lightweight knit fabric has a soft, smooth feel. • Mesh panels provide breathability where athletes need it most. • Zippers at the leg opening provide ease of on/off over shoes.

- 010** Black/Black Mesh/White Mesh/Wolf Grey/(White)
- 410** Midnight Navy/Midnight Navy Mesh/White Mesh/Royal Blue/(White)

FIT DETAILS:
MENS • Slim fit intent for a tailored look and feel.
WOMENS • Updated women's fit adds more space to the waist.
KIDS • Not too tight or overly baggy, these pants are made with the classic Nike fit your athletes know and love.



CLOSE UP VIEW OF PIPING COLORS



MENS / HV8386

SIZES: XS, S, M, L, XL, 2XL, 3XL



WOMENS / HV8393

SIZES: XS, S, M, L, X, 2XL



KIDS / HV8395

SIZES: XS, S, M, L, XL



NEW NIKE DRI-FIT STRIKE 26 TOP SS

M • HV8339 W • HV8341 K • HV8343

- 1 Heat Transfer Swoosh**
Swoosh execution is a high density heat transfer. The garment will also accept Direct Embroidery and Screen Prints.
- 2 Recycled Materials**
This garment is made with 100% recycled materials.
- 3 Side Panel**
Mesh side panels provide breathability where athletes need it most.
- 4 Signifier Language**
A link to the WC26 Chassis signifier and piping, celebrating the best athletes on the pitch.
- 5 Performance Fabrics**
Dri-FIT knit fabric on the main body wicks sweat away, while mesh side panels and sleeve inserts offer breathability where athletes need it most.
- 6 Fit For All Athletes**
Continuing the new Women's fit, adding more space to the waist, allowing Her to be at Her best. Fit remains consistent for Men and Youth.



 Sustainable Materials
[Nike.com/sustainability](https://www.nike.com/sustainability)

NEW
NIKE DRI-FIT STRIKE 26 SS TOP K
\$45.00

FABRIC: 100% polyester. OFFER DATE: 01/01/26 END DATE: 12/31/27

Nike Dri-FIT technology moves sweat away from skin for quicker evaporation, helping athletes stay dry and comfortable. • Mesh panels provide breathability where athletes need it most. • Lightweight knit fabric has a soft, smooth feel.

- | | |
|---|---|
| 010 Black/Wolf Grey/(White) | 329 Green Spark/Wolf Grey/(White) |
| 410 Midnight Navy/Royal Blue/(White) | 463 Royal Blue/Midnight Navy/(White) |
| 657 University Red/Black/(White) | |

FIT DETAILS:

MENS • Slim fit intent for a tailored look and feel.

WOMENS • Updated women's fit adds more space to the waist.

KIDS • Not too tight or overly baggy, this top is made with the classic Nike fit your athletes know and love.



CLOSE UP VIEW OF PIPING COLORS



MENS / HV8339

SIZES: XS, S, M, L, XL, 2XL, 3XL



WOMENS / HV8341

SIZES: XS, S, M, L, X, 2XL



KIDS / HV8343

SIZES: XS, S, M, L, XL



Sustainable Materials

NEW NIKE DRI-FIT STRIKE 26 SHORT KZ

M • HV8359 W • HV8363 K • HV8365

- 1 Secure Storage**
Two zippered side seam pockets offer secure storage options.
- 2 Recycled Materials**
This garment is made with 100% recycled materials.
- 3 Signifier Language**
A link to the WC26 Chassis signifier and piping, celebrating the best athletes on the pitch.
- 4 Performance Fabrics**
Dri-FIT knit fabric on the main body wicks sweat away, while mesh side panels and gussets offer breathability where athletes need it most.
- 5 Heat Transfer Swoosh**
Swoosh execution is a high density heat transfer. The garment will also accept Direct Embroidery and Screen Prints.



 Sustainable Materials
[Nike.com/sustainability](https://nike.com/sustainability)

NEW
NIKE DRI-FIT STRIKE 26 SHORT KZ
\$45.00

FABRIC: 100% polyester. OFFER DATE: 01/01/26 END DATE: 12/31/27

Nike Dri-FIT technology moves sweat away from skin for quicker evaporation, helping athletes stay dry and comfortable. •Elastic waistband with drawcord ensures a snug and secure fit. •Two zippered side pockets offer plenty of secure storage options. •Lightweight knit fabric has a soft, smooth feel. •Mesh panels provide breathability where athletes need it most. •Not too tight or overly baggy, these shorts are made with the classic Nike fit your athletes know and love.

- 010 Black/Black Mesh/White Mesh/Wolf Grey/(White)
- 410 Midnight Navy/Midnight Navy Mesh/White Mesh/Royal Blue/(White)



CLOSE UP VIEW OF PIPING COLORS



MENS / HV8359

SIZES: XS, S, M, L, XL, 2XL, 3XL



WOMENS / HV8363

SIZES: XS, S, M, L, X, 2XL



KIDS / HV8365

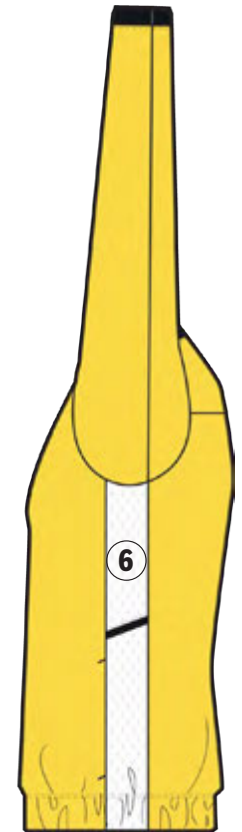
SIZES: XS, S, M, L, XL



NIKE DRI-FIT WOVEN ACADEMY 25 TRACK JACKET

M • FZ9837 W • FZ9843 K • FZ9851

- 1 Direct Embroidery Swoosh**
Swoosh execution is embroidered directly onto the garment. The garment will also accept Heat Transfer and Screen Prints.
- 2 Recycled Materials**
This garment is made with 100% recycled materials.
- 3 Secure Storage**
This style comes with zippered pockets for secure storage.
- 4 Performance Fabrics**
Dri-FIT woven fabric construction on the body and sleeves to help wick sweat away from the body.
- 5 Signifier Language**
The angled piping within the side panel gives a classic sport look in a modern cut.
- 6 Side Panel Construction**
The side panel is continued from the EC24 chassis which contributes to the efficiency of our patterns, reducing material waste.



 Sustainable Materials
[Nike.com/sustainability](https://www.nike.com/sustainability)

NIKE DRI-FIT WOVEN ACADEMY 25 TRACK JACKET
\$60.00

FABRIC: Body/panels/pocket bags: 100% polyester. Rib: 97% polyester/3% spandex.
OFFER DATE: 01/01/25 **END DATE:** 12/31/27

The Nike Academy 25 Track Jacket is designed to keep your players comfortable during chilly training sessions and pre-game warm-ups. Body is a Nike Dri-FIT woven fabric that moves sweat away to help keep athletes dry. This product is made with 100% recycled polyester fibers. Side panel construction uses a more efficient pattern to help reduce material waste.

- 010** Black/Wolf Grey/White/(White)
- 100** White/Black/Wolf Grey/(Black)
- 410** Midnight Navy/Royal Blue/White/(White)
- 657** University Red/Black/White/(White)
- 012** Wolf Grey/Black/White/(Black)
- 329** Green Spark/Black/White/(White)
- 463** Royal Blue/Midnight Navy/White/(White)
- 719** Tour Yellow/Black/White/(Black)



MENS / FZ9837

SIZES: S, M, L, XL, 2XL



WOMENS / FZ9843

SIZES: XS, S, M, L, XL



KIDS / FZ9851

SIZES: XS, S, M, L, XL



NIKE DRI-FIT ACADEMY 25 DRILL TOP

M • FZ9767 W • FZ9770 K • FZ9773

- 1 Direct Embroidery Swoosh**
Swoosh execution is embroidered directly onto the garment. The garment will also accept Heat Transfer and Screen Prints.
- 2 Recycled Materials**
This garment is made with 100% recycled materials.
- 3 Thumb Loop**
A thumb loop at the end of the sleeve opening gives the athlete the option to loop over their thumb, for a locked in, secure feeling.
- 4 Performance Fabrics**
The front and back body is a Dri-FIT knit fabric, wicking sweat away from the body. The sleeves are a Dri-FIT stretch-knit fabric for a full range of motion.
- 5 Signifier Language**
The angled piping within the side panel gives a classic sport look in a modern cut.
- 6 Side Panel Construction**
The side panel is continued from the EC24 chassis which contributes to the efficiency of our patterns, reducing material waste.



 Sustainable Materials
[Nike.com/sustainability](https://www.nike.com/sustainability)

NIKE DRI-FIT ACADEMY 25 DRILL TOP
\$52.00

FABRIC: 100% polyester. **OFFER DATE:** 01/01/25 **END DATE:** 12/31/27

This long-sleeve soccer top features stretchy, sweat-wicking fabric with mesh side panels, helping keep players dry and comfortable on and off the field. This product is made with 100% recycled polyester fibers. Side panel construction uses a more efficient pattern to help reduce material waste.

- | | |
|---|---|
| 010 Black/Wolf Grey/White/(White) | 012 Wolf Grey/Black/White/(Black) |
| 100 White/Black/Wolf Grey/(Black) | 329 Green Spark/Black/White/(White) |
| 410 Midnight Navy/Royal Blue/White/(White) | 463 Royal Blue/Midnight Navy/White/(White) |
| 657 University Red/Black/White/(White) | 719 Tour Yellow/Black/White/(Black) |



MENS / FZ9767

SIZES: S, M, L, XL, 2XL



WOMENS / FZ9770

SIZES: XS, S, M, L, XL



KIDS / FZ9773

SIZES: XS, S, M, L, XL



Sustainable Materials

NIKE DRI-FIT ACADEMY 25 CREW TOP
\$50.00

FABRIC: 100% polyester. **OFFER DATE:** 01/01/25 **END DATE:** 12/31/27

This long-sleeve soccer top features stretchy, sweat-wicking fabric with mesh side panels, helping keep players dry and comfortable on and off the field. A zipper from the neck opening along the shoulder seam keeps the front neck clear of distraction. This product is made with 100% recycled polyester fibers. Side panel construction uses a more efficient pattern to help reduce material waste.

- | | |
|---|---|
| 010 Black/Wolf Grey/White/(White) | 012 Wolf Grey/Black/White/(Black) |
| 100 White/Black/Wolf Grey/(Black) | 329 Green Spark/Black/White/(White) |
| 410 Midnight Navy/Royal Blue/White/(White) | 463 Royal Blue/Midnight Navy/White/(White) |
| 657 University Red/Black/White/(White) | 719 Tour Yellow/Black/White/(Black) |



WOMENS / FZ9764

SIZES: XS, S, M, L, XL



NIKE DRI-FIT ACADEMY 25 SHORT SLEEVE TOP

M • FZ9754 W • FZ9756 K • FZ9758

- 1 Direct Embroidery Swoosh**
Swoosh execution is embroidered directly onto the garment. The garment will also accept Heat Transfer and Screen Prints.
- 2 Recycled Materials**
This garment is made with 100% recycled materials.
- 3 Performance Fabrics**
Dri-FIT knit fabric on the front body, back body, and sleeves wicks sweat away, while mesh side panels offer breathability where athletes need it most.
- 4 Fit For All Athletes**
Continuing the new Women's fit, adding more space to the waist, allowing Her to be at Her best. Fit remains consistent for Men and Kids.
- 5 Signifier Language**
The angled piping within the side panel gives a classic sport look in a modern cut.
- 6 Side Panel Construction**
The side panel is continued from the EC24 chassis which contributes to the efficiency of our patterns, reducing material waste.



 Sustainable Materials
[Nike.com/sustainability](https://www.nike.com/sustainability)

NIKE DRI-FIT ACADEMY 25 SS TOP

\$27.00

FABRIC: 100% polyester. **OFFER DATE:** 01/01/25 **END DATE:** 12/31/27

This top features sweat-wicking fabric with mesh side and back panels to help keep players cool and dry during training. This product is made with 100% recycled polyester fibers. Side panel construction uses a more efficient pattern to help reduce material waste.

- | | |
|---|---|
| 010 Black/Wolf Grey/White/(White) | 012 Wolf Grey/Black/White/(Black) |
| 100 White/Black/Wolf Grey/(Black) | 329 Green Spark/Black/White/(White) |
| 410 Midnight Navy/Royal Blue/(White) | 463 Royal Blue/Midnight Navy/White/(White) |
| 657 University Red/Black/White/(White) | 719 Tour Yellow/Black/White/(Black) |



MENS / FZ9754

SIZES: S, M, L, XL, 2XL



WOMENS / FZ9756

SIZES: XS, S, M, L, XL



KIDS / FZ9758

SIZES: XS, S, M, L, XL

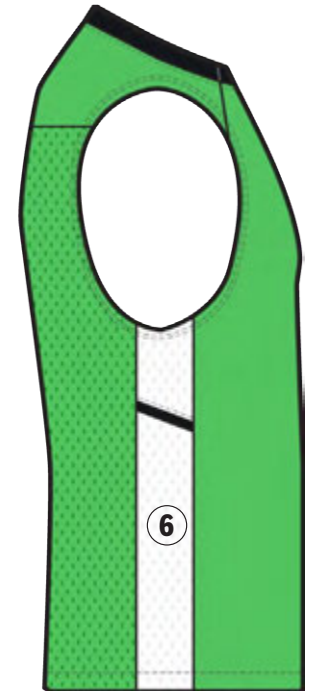


Sustainable Materials

NIKE DRI-FIT ACADEMY 25 SLEEVELESS TOP

M • FZ9747 W • FZ9749 K • FZ9751

- 1 Direct Embroidery Swoosh**
Swoosh execution is embroidered directly onto the garment. The garment will also accept Heat Transfer and Screen Prints.
- 2 Recycled Materials**
This garment is made with 100% recycled materials.
- 3 Performance Fabrics**
Dri-FIT knit fabric on the front body, back body, and sleeves wicks sweat away, while mesh side panels offer breathability where athletes need it most.
- 4 Fit For All Athletes**
Continuing the new Women's fit, adding more space to the waist, allowing Her to be at Her best. Fit remains consistent for Men and Kids.
- 5 Signifier Language**
The angled piping within the side panel gives a classic sport look in a modern cut.
- 6 Side Panel Construction**
The side panel is continued from the EC24 chassis which contributes to the efficiency of our patterns, reducing material waste.



 Sustainable Materials
[Nike.com/sustainability](https://nike.com/sustainability)

NIKE DRI-FIT ACADEMY 25 SL TOP

\$27.00

FABRIC: 100% polyester. **OFFER DATE:** 01/01/25 **END DATE:** 12/31/27

This top features sweat-wicking fabric with mesh side and back panels to help keep players cool and dry during training. This product is made with 100% recycled polyester fibers. Side panel construction uses a more efficient pattern to help reduce material waste.

- | | |
|---|---|
| 010 Black/Wolf Grey/White/(White) | 012 Wolf Grey/Black/White/(Black) |
| 100 White/Black/Wolf Grey/(Black) | 329 Green Spark/Black/White/(White) |
| 410 Midnight Navy/Royal Blue/(White) | 463 Royal Blue/Midnight Navy/White/(White) |
| 657 University Red/Black/White/(White) | 719 Tour Yellow/Black/White/(Black) |

MENS / FZ9747

SIZES: S, M, L, XL, 2XL



WOMENS / FZ9749

SIZES: XS, S, M, L, XL



KIDS / FZ9751

SIZES: XS, S, M, L, XL



Sustainable Materials

NIKE DRI-FIT ACADEMY 25 PANT KPZ

M • FZ9805 W • FZ9814 K • FZ9816

- 1 Secure Storage**
This style comes with zippered pockets for secure storage.
- 2 Recycled Materials**
This garment is made with 100% recycled materials.
- 3 Ankle Zippers**
A lower ankle zipper allows for on and off ease.
- 4 Performance Fabrics**
Dri-FIT knit fabric on the front and back body wicks sweat away, while offering stretch for freedom of motion.
- 5 Direct Embroidery Swoosh**
Swoosh execution is embroidered directly onto the garment. The garment will also accept Heat Transfer and Screen Prints.
- 6 Signifier Language**
The angled piping within the side panel gives a classic sport look in a modern cut.
- 7 Side Panel Construction**
The side panel is continued from the EC24 chassis which contributes to the efficiency of our patterns, reducing material waste.



 Sustainable Materials
[Nike.com/sustainability](https://nike.com/sustainability)

NIKE DRI-FIT ACADEMY 25 PANT KPZ
\$52.00

FABRIC: 100% polyester. **OFFER DATE:** 01/01/25 **END DATE:** 12/31/27

Let your players train in style and comfort with the Nike Academy 25 pants. Stretch fabric allows players to move freely while Dri-FIT technology helps them stay dry during play. Lower ankle zipper allows for easy removal over cleats. These pants are made with 100% recycled material. Side panel construction uses a more efficient pattern to help reduce material waste.

010 Black/White/(White)

410 Midnight Navy/White/(White)



MENS / FZ9805

SIZES: S, M, L, XL, 2XL



WOMENS / FZ9814

SIZES: XS, S, M, L, XL



KIDS / FZ9816

SIZES: XS, S, M, L, XL

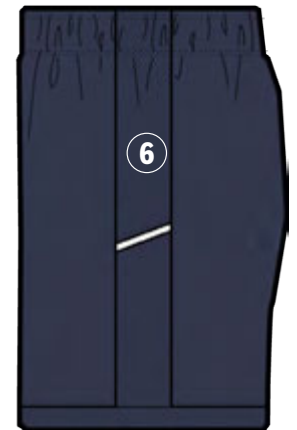


Sustainable Materials

NIKE DRI-FIT ACADEMY 25 SHORT K

M • FZ9776 W • FZ9780 K • FZ9784

- 1 Performance Fabrics**
Dri-FIT knit fabric on the front body, back body, and sleeves wicks sweat away, while mesh side panels offer breathability where athletes need it most.
- 2 Recycled Materials**
This garment is made with 100% recycled materials.
- 3 Signifier Language**
The angled piping within the side panel gives a classic sport look in a modern cut.
- 4 Inseam Measurement**
The Men's inseam is 8.25", Women's inseam is 5.75", and the Youth inseam grades by size from 7" for a Medium.
- 5 Direct Embroidery Swoosh**
Swoosh execution is embroidered directly onto the garment. The garment will also accept Heat Transfer and Screen Prints.
- 6 Side Panel Construction**
The side panel is continued from the EC24 chassis which contributes to the efficiency of our patterns, reducing material waste.



 Sustainable Materials
[Nike.com/sustainability](https://www.nike.com/sustainability)



NIKE DRI-FIT ACADEMY 25 SHORT K
\$27.00

FABRIC: 100% polyester. **OFFER DATE:** 01/01/25 **END DATE:** 12/31/27

Dri-FIT technology with mesh side panels and hem helps players stay dry and cool during training. Elastic waistband with drawcord helps ensure a snug and secure fit. This product is made with 100% recycled polyester fibers. Side panel construction uses a more efficient pattern to help reduce material waste.

010 Black/Black/(White)

410 Midnight Navy/Midnight Navy/(White)



MENS / FZ9776

SIZES: S, M, L, XL, 2XL **INSEAM LENGTH:** 8.25"



WOMENS / FZ9780

SIZES: XS, S, M, L, XL **INSEAM LENGTH:** 5.75"



KIDS / FZ9784

SIZES: XS, S, M, L, XL **INSEAM LENGTH:** 7" (SIZE MEDIUM)



Sustainable Materials

NIKE DRI-FIT ACADEMY PRO 24 TRACK JACKET K
\$65.00

FABRIC: 100% polyester. **OFFER DATE:** 01/01/24 **END DATE:** 12/31/26

Help your team look and train like the pros. The Nike Dri-FIT Academy Pro 24 Track Jacket is designed to keep your players comfortable during chilly training sessions and pre-game warmups. Body is a Nike Dri-FIT knit fabric that moves sweat away to help keep players dry. This jacket is made with 100% recycled material and the back panel construction uses a more efficient pattern to help reduce material waste. Slim fit for a tailored look and feel. Zippered pockets for secure storage.

- 010** Black/Black/Black/(White)
- 455** Obsidian/Obsidian/Obsidian/(White)
- 657** University Red/University Red/University Red/(White)
- 329** Green Spark/Green Spark/Green Spark/(White)
- 468** Royal Blue/Royal Blue/Royal Blue/(White)



MENS / FD7681

SIZES: XS, S, M, L, XL, 2XL, 3XL



WOMENS / FD7683

SIZES: XS, S, M, L, XL, 2XL



KIDS / FD7685

SIZES: XS, S, M, L, XL



Sustainable Materials

NIKE DRI-FIT ACADEMY PRO 24 DRILL TOP K
\$60.00

FABRIC: 100% polyester. **OFFER DATE:** 01/01/24 **END DATE:** 12/31/26

Help your team look and train like the pros in the Nike Dri-FIT Academy Pro 24 Drill Top. Lightweight ribbed material on back of the neck, shoulders and down through the arms. Body and sleeves are a Nike Dri-FIT knit fabric that moves sweat away to help keep players dry. This top is made with at least 100% recycled material. Back and side panel construction use a more efficient pattern to help reduce material waste. Standard fit for classic feel and comfort. Thumb loop at the end of sleeve opening.

- 010** Black/Black/White/(White)
- 455** Obsidian/Obsidian/White/(White)
- 657** University Red/University Red/Black/(White)
- 329** Green Spark/Green Spark/White/(White)
- 467** Royal Blue/Royal Blue/White/(White)



MENS / FD7667

SIZES: XS, S, M, L, XL, 2XL, 3XL



WOMENS / FD7669

SIZES: XS, S, M, L, XL, 2XL



KIDS / FD7671

SIZES: XS, S, M, L, XL



Sustainable Materials

NIKE DRI-FIT ACADEMY PRO 24 CREW TOP

\$60.00

FABRIC: 100% polyester. **OFFER DATE:** 01/01/24 **END DATE:** 12/31/26

Help your team look and train like the pros in the Nike Dri-FIT Academy Pro 24 Crew Top. Lightweight ribbed material on back of the neck wrapping the shoulders to the arm hole. Body and sleeves are a Nike Dri-FIT knit fabric that moves sweat away to help keep players dry. This top is made with at least 100% recycled material. Back and side panel construction use a more efficient pattern to help reduce material waste. Standard fit for classic feel and comfort. Thumb loop at the end of sleeve opening.

010 Black/White/Black/(White)

329 Green Spark/White/Green Spark/(White)

458 Obsidian/White/Obsidian/(White)

657 University Red/Black/University Red/(White)

013 Wolf Grey/Black/Volt/(Black)

410 Obsidian/Anthracite/Hyper Pink/(White)

465 Royal Blue/White/Royal Blue/(White)

719 Tour Yellow/Black/Tour Yellow/(Black)



WOMENS / FD7659

SIZES: XS, S, M, L, XL, 2XL



Sustainable Materials

NIKE DRI-FIT ACADEMY PRO 24 PANT KPZ
\$60.00

FABRIC: 100% polyester. **OFFER DATE:** 01/01/24 **END DATE:** 12/31/26

Help your team look and train like the pros. The Nike Dri-FIT Academy Pro 24 Pant is designed to keep your players comfortable during chilly training sessions and pre-game warmups. Lightweight rib material on the lower leg to help enable mobility and range of motion. Body is a Nike Dri-FIT knit fabric that moves sweat away to help keep players dry. This pant is made with at least 75% recycled material and the interior gusset construction helps reduce material waste. Slim fit for tailored look and feel. Zippered pockets for secure storage. Lower ankle zipper allows for easy removal over cleats.

010 Black/(White)

451 Obsidian/(White)



MENS / FD7672

SIZES: XS, S, M, L, XL, 2XL, 3XL



WOMENS / FD7677

SIZES: XS, S, M, L, XL, 2XL



KIDS / FD7679

SIZES: XS, S, M, L, XL



Sustainable Materials

NIKE DRI-FIT ACADEMY PRO 24 SS TOP K
\$35.00

FABRIC: 100% polyester. **OFFER DATE:** 01/01/24 **END DATE:** 12/31/26

Help your team look and train like the pros in the Nike Dri-FIT Academy Pro 24 SS Top K. Lightweight rib material on the front and back neck wrapping the shoulders to the armhole. Body and sleeves are a Nike Dri-FIT knit fabric that moves sweat away to help keep players dry. This top is made with 100% recycled material and the side panel construction uses a more efficient pattern to help reduce material waste. Slim fit for a tailored look and feel.

- 010** Black/White/Black/(White)
- 458** Obsidian/White/Obsidian/(White)
- 657** University Red/Black/University Red/(White)
- 329** Green Spark/White/Green Spark/(White)
- 465** Royal Blue/White/Royal Blue/(White)



MENS / FD7592

SIZES: XS, S, M, L, XL, 2XL, 3XL



WOMENS / FD7594

SIZES: XS, S, M, L, XL, 2XL



KIDS / FD7597

SIZES: XS, S, M, L, XL



Sustainable Materials

NIKE DRI-FIT ACADEMY PRO 24 SHORT KZ

\$35.00

FABRIC: 100% polyester. **OFFER DATE:** 01/01/24 **END DATE:** 12/31/26

Help your team look and train like the pros in the Nike Dri-FIT Academy Pro 24 Short KZ. Lightweight ribbed material on the lower leg to help enable mobility and range of motion. Shorts are constructed with Dri-FIT knit fabric that moves sweat away to help keep players dry. This product made with 100% recycled material. Side panel and gusset construction use a more efficient pattern to help reduce material waste. Standard fit for classic feel and comfort. Zippered pockets for secure storage.

010 Black/(White)

451 Obsidian/(White)



MENS / FD7653

SIZES: XS, S, M, L, XL, 2XL, 3XL, ST, MT, LT, XLT, 2XLT, 3XLT

INSEAM LENGTH: 8.25"



WOMENS / FD7655

SIZES: XS, S, M, L, XL, 2XL, XST, ST, MT, LT, XLT, 2XLT

INSEAM LENGTH: 4"



KIDS / FD7657

SIZES: XS, S, M, L, XL



Sustainable Materials

**NIKE THERMA-FIT ACADEMY PRO 24
SDF JACKET**
\$185.00

FABRIC: 100% polyester. OFFER DATE: 01/01/24 END DATE: 12/31/26

010 Black/(White)

451 Obsidian/(White)



MENS / FD7709

SIZES: XS, S, M, L, XL, 2XL, 3XL



WOMENS / FD7712

SIZES: XS, S, M, L, XL, 2XL



KIDS / FD7714

SIZES: XS, S, M, L, XL



NIKE THERMA-FIT ACADEMY PRO 24 FALL JACKET
\$155.00

FABRIC: 100% polyester. OFFER DATE: 01/01/24 END DATE: 12/31/26

010 Black/(White)

451 Obsidian/(White)



MENS / FD7702

SIZES: XS, S, M, L, XL, 2XL, 3XL



WOMENS / FD7704

SIZES: XS, S, M, L, XL, 2XL



KIDS / FD7708

SIZES: XS, S, M, L, XL



Sustainable Materials

NIKE STORM-FIT ACADEMY PRO 25 RAIN JACKET

M • FZ9858 W • FZ9860 K • FZ9863

- 1 Heat Transfer Swoosh**
Swoosh execution is a flat ink heat transfer. The garment will also accept Direct Embroidery and Screen Prints.
- 2 Recycled Materials**
This garment is made with 100% recycled materials.
- 3 Hood Adaptability**
A bungee cord Jock allows the athlete to secure the hood to their personal preference.
- 4 Signifier Language**
The angled piping within the side panel gives a classic sport look in a modern cut.
- 5 Secure Storage**
This style comes with zippered pockets for secure storage.
- 6 Performance Fabrics**
Storm-FIT water repellent woven fabric on body and sleeves helps keep you dry.
- 7 Performance Ventilation**
A vent in the back allows for breathability to keep the athlete cool while training.
- 8 Side Panel Construction**
The side panel is continued from the EC24 chassis which contributes to the efficiency of our patterns, reducing material waste.



 Sustainable Materials
[Nike.com/sustainability](https://nike.com/sustainability)

**NIKE STORM-FIT ACADEMY PRO 25
RAIN JACKET
FZ9858 \$90.00**

FABRIC: 100% polyester. **OFFER DATE:** 01/01/25 **END DATE:** 12/31/27

Designed to keep your teams covered when the weather turns wet. Storm-FIT water-repellent finish with a back vent helps players stay warm and dry without overheating. A bungee cord lock allows the athlete to secure the hood to their personal preference. This product is made with 100% recycled polyester fibers. Side panel construction uses a more efficient pattern to help reduce material waste.

010 Black/(White)

410 Midnight Navy/(White)



MENS / FZ9858

SIZES: XS, S, M, L, XL, 2XL, 3XL



WOMENS / FZ9860

SIZES: XS, S, M, L, XL, 2XL, 3XL



KIDS / FZ9863

SIZES: XS, S, M, L, XL



Sustainable Materials

NEW NIKE THERMA-FIT PARK 26 SDF JACKET

M • HM7278 W • HM7280 K • HM7282

- 1 Comfort Hood**
Lined hood provides warmth and comfort with this soft fleece fabric.
- 2 Direct Embroidery Swoosh**
Swoosh execution is embroidered directly onto the garment.
- 3 Recycled Materials**
This garment is made with 100% recycled materials.
- 4 Secure Storage**
Two zippered side seam pockets offer secure storage options.
- 5 Performance Fabrics**
The outer shell material is a woven, water repellant fabric, keeping athletes warm and dry on the sidelines.
- 6 Fit For All Athletes**
Providing extended coverage to all athletes on the pitch.



 Sustainable Materials
[Nike.com/sustainability](https://nike.com/sustainability)

NEW
NIKE THERMA-FIT PARK 26 SDF JACKET
\$150.00

FABRIC: 100% polyester. **OFFER DATE:** 01/01/26 **END DATE:** 12/31/31

Nike Therma-FIT technology helps manage the body's natural heat to help keep athletes warm in cold-weather conditions. • Fleece-lined hood helps provides warmth and comfort. • Water-repellent finish helps keep players dry in wet weather. • Two zippered side pockets offer plenty of secure storage options. • Not too tight or overly baggy, this jacket made with the classic Nike fit your athletes know and love.

010 Black/White/(White)

410 Midnight Navy/White/(White)



MENS / HM7278

SIZES: XS, S, M, L, XL, 2XL, 3XL



WOMENS / HM7280

SIZES: XS, S, M, L, X, 2XL



KIDS / HM7282

SIZES: XS, S, M, L, XL



Sustainable Materials

NEW NIKE THERMA-FIT PARK 26 FALL JACKET

M • HM7270 W • HM7272 K • HM7274

- 1 Comfort Hood**
Lined hood provides warmth and comfort with this soft fleece fabric.
- 2 Direct Embroidery Swoosh**
Swoosh execution is embroidered directly onto the garment.
- 3 Recycled Materials**
This garment is made with 100% recycled materials.
- 4 All Over Print**
The graphic print is shared from the Champions League 24/25 prematch graphic, clashing images of classic sculpture with a D.I.Y zine aesthetic, a rebel celebration of the Nike Goddess.
- 5 Performance Fabrics**
The outer shell material is a woven, water repellent fabric, keeping athletes warm and dry on the sidelines.
- 6 Secure Storage**
Two zippered side seam pockets offer secure storage options.



 Sustainable Materials
[Nike.com/sustainability](https://nike.com/sustainability)

NEW
NIKE THERMA-FIT PARK 26 FALL JACKET
\$120.00

FABRIC: 100% polyester. **OFFER DATE:** 01/01/26 **END DATE:** 12/31/31

Nike Therma-FIT technology helps manage the body's natural heat to help keep athletes warm in cold-weather conditions. • Fleece-lined hood helps provides warmth and comfort. • Water-repellent finish helps keep players dry in wet weather. • Two zippered side pockets offer plenty of secure storage options. • Not too tight or overly baggy, this jacket made with the classic Nike fit your athletes know and love.

010 Black/White/(White)

410 Midnight Navy/White/(White)



MENS / HM7270

SIZES: XS, S, M, L, XL, 2XL, 3XL



WOMENS / HM7272

SIZES: XS, S, M, L, X, 2XL



KIDS / HM7274

SIZES: XS, S, M, L, XL

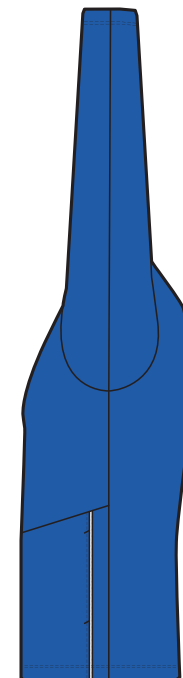


Sustainable Materials

NEW NIKE DRI-FIT PARK 26 TRACK JACKET K

M • HM7249 W • HM7252 K • HM7256

- 1 Direct Embroidery Swoosh**
Swoosh execution is embroidered directly onto the garment. The garment will also accept Heat Transfer and Screen Prints.
- 2 Recycled Materials**
This garment is made with 100% recycled materials.
- 3 Secure Storage**
Two zippered side seam pockets offer secure storage options on the jacket.
- 4 Performance Fabrics**
Constructed with a Dri-FIT knit fabric to wick sweat away from the body.
- 5 Fit For All Athletes**
Continuing the new Women's fit, adding more space to the waist, allowing Her to be at Her best. Fit remains consistent for Men and Youth.



 Sustainable Materials
[Nike.com/sustainability](https://nike.com/sustainability)

NEW
NIKE DRI-FIT PARK 26 TRACK JACKET K
\$45.00

FABRIC: 100% polyester. OFFER DATE: 01/01/26 END DATE: 12/31/31

- 010 Black/White/(White) 100 White/Black/(Black) 410 Midnight Navy/White/(White)
- 463 Royal Blue/White/(White) 657 University Red/White/(White)



MENS / HM7249

SIZES: XS, S, M, L, XL, 2XL, 3XL



WOMENS / HM7252

SIZES: XS, S, M, L, X, 2XL



KIDS / HM7256

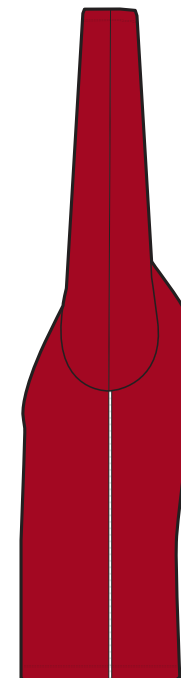
SIZES: XS, S, M, L, XL



NEW NIKE DRI-FIT PARK 26 DRILL TOP

M • IB7536 W • IB7540 K • IB7542

- 1 Direct Embroidery Swoosh**
Swoosh execution is embroidered directly onto the garment. The garment will also accept Heat Transfer and Screen Prints.
- 2 Center Zipper**
Center half zip to regulate heat and for ease of on/off.
- 3 Recycled Materials**
This garment is made with 100% recycled materials.
- 4 Performance Fabrics**
Constructed with a Dri-FIT knit fabric to wick sweat away from the body.
- 5 Fit For All Athletes**
Continuing the new Women's fit, adding more space to the waist, allowing Her to be at Her best. Fit remains consistent for Men and Youth.



 Sustainable Materials
[Nike.com/sustainability](https://www.nike.com/sustainability)

NEW
NIKE DRI-FIT PARK 26 DRILL TOP
\$50.00

FABRIC: 100% polyester. OFFER DATE: 01/01/26 END DATE: 12/31/31

Nike Dri-FIT technology moves sweat away from skin for quicker evaporation, helping athletes stay dry and comfortable. •Color pop piping on the neck opening and lower body.

- 010 Black/White/(White)
- 100 White/Black/(Black)
- 410 Midnight Navy/White/(White)
- 463 Royal Blue/White/(White)
- 657 University Red/White/(White)

FIT DETAILS:

MENS • Slim fit intent for a tailored look and feel.

WOMENS • Updated women's fit adds more space to the waist.

KIDS • Not too tight or overly baggy, this top is made with the classic Nike fit your athletes know and love.



MENS / IB7536

SIZES: XS, S, M, L, XL, 2XL, 3XL



WOMENS / IB7540

SIZES: XS, S, M, L, X, 2XL



KIDS / IB7542

SIZES: XS, S, M, L, XL

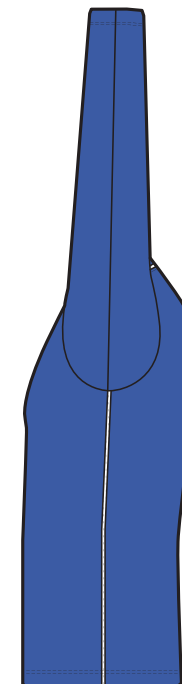


Sustainable Materials

NEW NIKE DRI-FIT PARK 26 CREW TOP

M • HM7165 W • HM7167 K • HM7170

- 1 Direct Embroidery Swoosh**
Swoosh execution is embroidered directly onto the garment. The garment will also accept Heat Transfer and Screen Prints.
- 2 Recycled Materials**
This garment is made with 100% recycled materials.
- 3 Performance Fabrics**
Constructed with a Dri-FIT knit fabric to wick sweat away from the body.
- 4 Fit For All Athletes**
Continuing the new Women's fit, adding more space to the waist, allowing Her to be at Her best. Fit remains consistent for Men and Youth.



 Sustainable Materials
[Nike.com/sustainability](https://www.nike.com/sustainability)

NEW
NIKE DRI-FIT PARK 26 CREW TOP
\$45.00

FABRIC: 100% polyester. OFFER DATE: 01/01/26 END DATE: 12/31/31

Nike Dri-FIT technology moves sweat away from skin for quicker evaporation, helping athletes stay dry and comfortable. • Mesh piping provides a sporty visual with the opportunity to color pop.

- | | | |
|-------------------------------------|---|--|
| 010 Black/White/(White) | 100 White/Black/(Black) | 410 Midnight Navy/White/(White) |
| 463 Royal Blue/White/(White) | 657 University Red/White/(White) | |

FIT DETAILS:

MENS • Slim fit intent for a tailored look and feel.

WOMENS • Updated women's fit adds more space to the waist.

KIDS • Not too tight or overly baggy, this top is made with the classic Nike fit your athletes know and love.



MENS / HM7165

SIZES: XS, S, M, L, XL, 2XL, 3XL



WOMENS / HM7167

SIZES: XS, S, M, L, X, 2XL



KIDS / HM7170

SIZES: XS, S, M, L, XL



Sustainable Materials

NEW NIKE DRI-FIT PARK 26 SS TOP

M • HM7127 W • HM7160 K • HM7134

- 1 Direct Embroidery Swoosh**
Swoosh execution is embroidered directly onto the garment. The garment will also accept Heat Transfer and Screen Prints.
- 2 Recycled Materials**
This garment is made with 100% recycled materials.
- 3 Performance Fabrics**
Dri-FIT knit fabric on the front body, back body, and sleeves wicks sweat away, while mesh side panels offer breathability where athletes need it most.
- 4 Fit For All Athletes**
Continuing the new Women's fit, adding more space to the waist, allowing Her to be at Her best. Fit remains consistent for Men and Youth.



 Sustainable Materials
[Nike.com/sustainability](https://nike.com/sustainability)

NEW
NIKE DRI-FIT PARK 26 SS TOP
\$20.00

FABRIC: 100% polyester. OFFER DATE: 01/01/26 END DATE: 12/31/31

Nike Dri-FIT technology moves sweat away from skin for quicker evaporation, helping athletes stay dry and comfortable. • Mesh back provides breathability where athletes need it most.

- 010 Black/White/(White) 100 White/Black/(Black) 410 Midnight Navy/White/(White)
- 463 Royal Blue/White/(White) 657 University Red/White/(White)

FIT DETAILS:
MENS • Slim fit intent for a tailored look and feel.
WOMENS • Updated women's fit adds more space to the waist.
KIDS • Not too tight or overly baggy, this jersey is made with the classic Nike fit your athletes know and love.



MENS / HM7127

SIZES: XS, S, M, L, XL, 2XL, 3XL



WOMENS / HM7160

SIZES: XS, S, M, L, X, 2XL



KIDS / HM7134

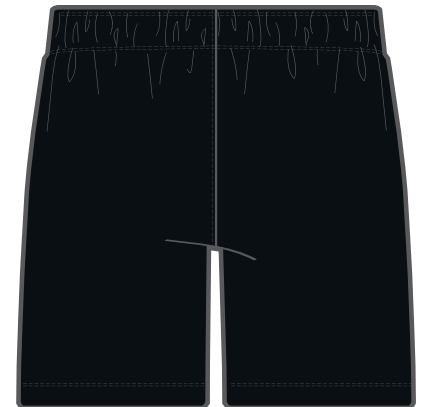
SIZES: XS, S, M, L, XL



NEW NIKE DRI-FIT PARK 26 SHORT KZ

M • HM7146 W • HM7162 K • HM7164

- 1 Secure Storage**
Two zippered side seam pockets offer secure storage options on this short.
- 2 Recycled Materials**
This garment is made with 100% recycled materials.
- 3 Mesh Piping**
Mesh piping gives you the opportunity to pop your team color.
- 4 Performance Fabrics**
Constructed with Dri-FIT knit fabric that wicks sweat away from the body.
- 5 Direct Embroidery Swoosh**
Swoosh execution is embroidered directly onto the garment. The garment will also accept Heat Transfer and Screen Prints.



 Sustainable Materials
[Nike.com/sustainability](https://nike.com/sustainability)

NEW
NIKE DRI-FIT PARK 26 SHORT KZ
\$30.00

FABRIC: 100% polyester. **OFFER DATE:** 01/01/26 **END DATE:** 12/31/31

Nike Dri-FIT technology moves sweat away from skin for quicker evaporation, helping athletes stay dry and comfortable. •Elastic waistband with drawcord ensures a snug and secure fit. •Mesh piping provides a sporty visual with the opportunity to color pop. •Two zippered side pockets offer plenty of secure storage options. •Lightweight knit fabric has a soft, smooth feel. •Not too tight or overly baggy, these shorts are made with the classic Nike fit your athletes know and love.

010 Black/White/(White)

410 Midnight Navy/White/(White)



MENS / HM7146

SIZES: XS, S, M, L, XL, 2XL, 3XL, ST, MT, LT, XLT, 2XLT, 3XLT



WOMENS / HM7162

SIZES: XS, S, M, L, XL, 2XL, XST, ST, MT, LT, XLT, 2XLT



KIDS / HM7164

SIZES: XS, S, M, L, XL



NEW NIKE DRI-FIT PARK 26 PANT KP

M • HM7171 W • HM7210 K • HM7212

- 1 Performance Fabrics**
Dri-FIT knit fabric on the main body wicks sweat away, while a mesh back panel offers additional breathability and comfort where athletes need it most.
- 2 Recycled Materials**
This garment is made with 100% recycled materials.
- 3 Mesh Piping**
Mesh piping provides a sporty visual with the opportunity to color pop.
- 4 Direct Embroidery Swoosh**
Swoosh execution is embroidered directly onto the garment. The garment will also accept Heat Transfer and Screen Prints.
- 5 Pockets**
Two side seam pockets offer storage options.



 Sustainable Materials
[Nike.com/sustainability](https://www.nike.com/sustainability)

NEW
NIKE DRI-FIT PARK 26 PANT KP
\$35.00

FABRIC: 100% polyester. **OFFER DATE:** 01/01/26 **END DATE:** 12/31/31

Nike Dri-FIT technology moves sweat away from skin for quicker evaporation, helping athletes stay dry and comfortable. •Elastic waistband with drawcord ensures a snug and secure fit, •Lightweight knit fabric has a soft, smooth feel. •Mesh piping provides a sporty visual with the opportunity to color pop.

- 010** Black/(White)
- 410** Midnight Navy/(White)

FIT DETAILS:

MENS • Slim fit intent for a tailored look and feel.

WOMENS • Not too tight or overly baggy, these pants are made with the classic Nike fit your athletes know and love.

KIDS • Not too tight or overly baggy, these pants are made with the classic Nike fit your athletes know and love.



MENS / HM7171

SIZES: XS, S, M, L, XL, 2XL, 3XL



WOMENS / HM7210

SIZES: XS, S, M, L, X, 2XL



KIDS / HM7212

SIZES: XS, S, M, L, XL



Sustainable Materials

NIKE DRY PARK FIRSTLAYER JERSEY LS

\$32.00

FABRIC: 100% polyester. **OFFER DATE:** 01/01/20 **END DATE:** 12/31/26

When you need a little extra warmth, the Nike Dri-FIT Park First Layer Jersey provides coverage that won't cut down your speed. The stretchy fabric and Invisible Thumb Loops create a streamlined layer that moves smoothly below your kit. Modified V-neck sits flush against the body below an outer-layer. Tight fit gives a streamlined look and feel. Raglan sleeves eliminate the shoulder seam to help you move freely. Invisible Thumb Loops keep hands covered and warm, but stay hidden when not in use. Swoosh design trademark is heat transferred on the center of the chest.

- 010** Black/(White)
- 100** White/(Cool Grey)
- 410** Midnight Navy/(White)



MENS / AV2609

SIZES: S, M, L, XL, 2XL **BODY WIDTH:** 19.9" **BODY LENGTH:** 30" (SIZE LARGE)



WOMENS / AV2610

SIZES: XS, S, M, L, XL



KIDS / AV2611

SIZES: XS, S, M, L, XL



MENS NIKE PRO WARM TRAINING TIGHT
DH4802 \$58.00

SIZES: S, M, L, XL, 2XL, 3XL
FABRIC: Body: 88% polyester/12% spandex. Rib: 92% polyester/8% spandex.
OFFER DATE: 01/01/22
END DATE: 04/01/28

The Nike Pro Warm Tights are made with sweat-wicking technology and ribbed panels to keep you comfortable. Wear them for warmth during your toughest workouts or under your game-day uniform. Nike Dri-FIT technology moves sweat away from your skin for quicker evaporation, helping you stay dry and comfortable. Stretchy fabric creates a compressive feel. Ribbed panels at the lower back, inseam and inner ankle add flexibility to keep you moving freely. Tight fit for a body-hugging feel.

Hip width: 17", Inseam length: 26" (size large).

010 Black/(White) **100** White/(Black)



BACK VIEW

MENS NIKE PRO TRAINING TIGHT
DH4769 \$35.00

SIZES: S, M, L, XL, 2XL, 3XL
FABRIC: Body: 90% polyester/10% spandex. Mesh: 92% polyester/8% spandex.
OFFER DATE: 01/01/22
END DATE: 04/01/27

More than a base layer, the Nike Pro Tights hug you with lightweight fabric that keeps you feeling dry, cool and supported from warmups through cool downs. Nike Dri-FIT technology moves sweat away from your skin for quicker evaporation. They're made with at least 75% recycled polyester fibers in a stretchy fabric that helps you move naturally during high-intensity sets. Mesh at the inseam and upper seat lets air flow to help keep you cool. A double-layer, darted mesh gusset in front puts breathability where you need it. The snug elastic waistband holds the tights in place. Flat seams throughout feel smooth against your skin. Customize with your team's colors for a coordinated look.

Hip width: 17", Inseam length: 28.75" (size large).

010 Black/(White) **100** White/(Black)



BACK VIEW

MENS NIKE PRO 3/4-LENGTH TRAINING TIGHT
DH4780 \$35.00

SIZES: S, M, L, XL, 2XL, 3XL
FABRIC: Body: 90% polyester/10% spandex. Mesh: 92% polyester/8% spandex.
OFFER DATE: 01/01/22
END DATE: 04/01/27

Much more than a base layer, the Nike Pro Tights hug you with lightweight fabric that keeps you feeling dry, cool and supported from warmups through cool downs. They're made with at least 75% recycled polyester fibers in a stretchy design that helps you move at full intensity during your toughest workouts or competitions. Mesh at the inseam and upper seat lets air flow to help keep you cool. A double-layer, darted mesh gusset in front puts breathability where you need it. The snug elastic waistband holds the tights in place. Flat seams throughout feel smooth against your skin. Customize with your team's colors for a coordinated look.

Hip width: 17", Inseam length: 23.5" (size large).

-
- 010** Black/(White) **100** White/(Black)



MENS NIKE PRO TRAINING COMPRESSION
SHORT
DH4762 \$30.00

SIZES: XS, S, M, L, XL, 2XL, 3XL, 4XL, LT, XLT, 2XLT, 3XLT, 4XLT
FABRIC: Body: 90% polyester/10% spandex. Mesh: 92% polyester/8% spandex.
ELASTIC: 46% nylon/43% polyester/11% spandex.
OFFER DATE: 01/01/22
END DATE: 04/01/27

Much more than a base layer, the Nike Pro Shorts hug you with lightweight fabric that keeps you feeling dry, cool and supported from warmups through cool downs. They're made with at least 75% recycled polyester fibers in a stretchy design that helps you move at full intensity during your toughest workouts or competitions. Mesh at the inseam and upper seat lets air flow to help keep you cool. A double-layer, darted mesh gusset in front prioritizes breathability where you need it most. Customize with your team's colors for a coordinated look.

Hip width: 17", Inseam length: 7.75" (size large). Tall inseam length: +1" (all sizes).

-
- 010** Black/(Cool Grey) **073** Dark Steel Grey/(Black)
 - 100** White/(Cool Grey) **341** Gorge Green/(Cool Grey)
 - 419** College Navy/(Cool Grey) **493** Game Royal/(Cool Grey)
 - 545** Court Purple/(Cool Grey) **657** University Red/(Cool Grey)



WOMENS NIKE PRO 365 TIGHT
DH4893 \$50.00

SIZES: XS, S, M, L, XL, 2XL
FABRIC: Body: 83% polyester/17% spandex. Mesh: 81% polyester/19% spandex.
OFFER DATE: 01/01/22
END DATE: 04/01/27

The Nike Pro 365 Leggings wrap you in soft fabric that moves as you stretch, lunge and sprint your way through your toughest workouts. This mindful design is made with at least 75% recycled polyester fibers and mesh at the back panel that lets your skin breathe when the temp starts to rise. Nike Dri-FIT technology moves sweat away from your skin for quicker evaporation, helping you stay dry and comfortable. A wide elastic waistband holds the leggings in place. Tight fit for a body-hugging feel. Customize with your team's colors for a coordinated look.

Hip width: 14.5", Inseam length: 26.5" (size medium).

- | | | |
|---------------------------------|-----------------------------------|-----------------------------------|
| 010 Black/(White) | 091 Carbon Heather/(Black) | 100 White/(Black) |
| 419 College Navy/(White) | 493 Game Royal/(White) | 657 University Red/(White) |



BACK VIEW

WOMENS NIKE PRO 365 7/8-LENGTH TIGHT
DH4896 \$45.00

SIZES: XS, S, M, L, XL, 2XL
FABRIC: Body: 78-83% polyester/17-22% spandex. Material percentages may vary.
MESH: 81% polyester/19% spandex.
OFFER DATE: 01/01/22
END DATE: 04/01/27

The Nike Pro 365 Leggings wrap you in soft knit fabric that moves as you stretch, lunge and sprint your way through your toughest workouts. The mindful design is made with at least 50% recycled polyester fibers and mesh at the back that lets your skin breathe when the temp starts to rise. Nike Dri-FIT technology moves sweat away from your skin for quicker evaporation, helping you stay dry and comfortable. Tight fit for a body-hugging feel. Customize the colors and details for a coordinated look for your team.

Hip width: 14", Inseam length: 24" (size medium).

- | | | |
|---------------------------------|-----------------------------------|-----------------------------------|
| 010 Black/(White) | 091 Carbon Heather/(Black) | 100 White/(Black) |
| 419 College Navy/(White) | 493 Game Royal/(White) | 657 University Red/(White) |



BACK VIEW

**WOMENS NIKE PRO HYPERCOOL 3/4 TIGHT
DX9129 \$60.00**

SIZES: XS, S, M, L, XL, 2XL, 3XL, ST, MT, LT, XLT, 2XLT, 3XLT
FABRIC: Body: 82% polyester/18% spandex. Mesh: 92% polyester/8% spandex.
 Overlays: 84% polyester/16% spandex. Gusset Lining: 100% polyester.
OFFER DATE: 07/01/23
END DATE: 04/01/28

The Nike Pro HyperCool Tights feature durable, sweat-wicking fabric to keep you dry and comfortable during your game or practice. 3/4-length design provides coverage with added cooling. Flat elastic waistband provides a secure fit.

Hip width: 13.75", Inseam length: 20.5" (size medium). Tall inseam length: +1.25".

- | | | |
|-------------------------------------|------------------------------------|---------------------------------|
| 010 Black/(White) | 060 Team Anthracite/(White) | 100 White/(Black) |
| 341 Team Dark Green/(White) | 419 Team Navy/(White) | 493 Team Royal/(White) |
| 545 Team Purple/(White) | 610 Team Cardinal/(White) | 657 Team Scarlet/(White) |
| 669 Team Dark Maroon/(White) | | |



**WOMENS NIKE PRO 8" SHORT
DX9131 \$47.00**

SIZES: XS, S, M, L, XL, 2XL, 3XL, ST, MT, LT, XLT, 2XLT, 3XLT
FABRIC: Body: 82% polyester/18% spandex. Gusset lining: 100% polyester.
OFFER DATE: 07/01/23
END DATE: 04/01/28

The Nike Pro 8" Shorts wrap you in stretchy fabric with Dri-FIT technology to keep you feeling supported and dry during intense workouts. An exposed elastic waistband gives you a supportive feel.

Hip width: 13.75".

- | | | |
|-------------------------------------|------------------------------------|---------------------------------|
| 010 Black/(White) | 060 Team Anthracite/(White) | 100 White/(Black) |
| 341 Team Dark Green/(White) | 419 Team Navy/(White) | 493 Team Royal/(White) |
| 545 Team Purple/(White) | 610 Team Cardinal/(White) | 657 Team Scarlet/(White) |
| 669 Team Dark Maroon/(White) | | |



**WOMENS NIKE PRO 365 SHORT 5IN
DH4886 \$30.00**

SIZES: XS, S, M, L, XL, 2XL
FABRIC: 83% polyester/17% spandex.
OFFER DATE: 01/01/22
END DATE: 04/01/27

The Nike Pro 365 Shorts wrap you in stretchy fabric with Dri-FIT technology to keep you feeling supported and dry during intense workouts. This mindful, versatile design uses at least 75% recycled polyester fibers and smoothly layers under other training wear. The mid-rise design has a wide elastic waistband that wraps your core in supportive comfort. Tight fit for a body-hugging feel. Customize these shorts with your team's colors for a coordinated look.

Hip width: 14.5", Inseam length: 5" (size medium).

- | | | |
|---------------------------------|-----------------------------------|-------------------------------|
| 010 Black/(White) | 091 Carbon Heather/(Black) | 100 White/(Black) |
| 341 Gorge Green/(White) | 419 College Navy/(White) | 493 Game Royal/(White) |
| 545 Court Purple/(White) | 657 University Red/(White) | |



**WOMENS NIKE PRO 365 SHORT 3IN
DH4863 \$30.00**

SIZES: XS, S, M, L, XL, 2XL
FABRIC: 78% polyester/22% spandex.
OFFER DATE: 01/01/22
END DATE: 04/01/27

The Nike Pro 365 Shorts are made with stretchy, smooth, supportive fabric—made with at least 50% recycled polyester fibers—that wicks sweat to help you stay dry and comfortable during your workout. Nike Dri-FIT technology moves sweat away from your skin for quicker evaporation, helping you stay dry and comfortable. A wide, mid-rise elastic waistband feels supportive around your core. Tight fit for a body-hugging feel. Customize with your team's colors for a coordinated look.

Hip width: 14.5", Inseam length: 3" (size medium).

- | | | |
|---------------------------------|-----------------------------------|--------------------------|
| 010 Black/(White) | 091 Carbon Heather/(Black) | 100 White/(Black) |
| 419 College Navy/(White) | | |



WOMENS NIKE PRO LEAKPROOF PERIOD PROTECTION TEAM 5IN SHORT FQ3012 \$45.00

SIZES: XXS, XS, S, M, L, XL, 2XL
FABRIC: Body: 82% polyester/18% spandex. Panels Lining: 62% polyester/38% spandex. Gusset Lining: 66% polyester/34% spandex.
OFFER DATE: 07/01/24
END DATE: 04/01/28

Give your players the protection they need. These shorts are made with an ultrathin absorbent liner that helps prevent period leaks when worn as a backup to usual protection. Color options allow for a team-right look. An incredibly sleek design includes a superthin, absorbent liner and a sewn-in brief made to move with you. Nike Dri-FIT technology moves sweat away from your skin for quicker evaporation, helping you stay dry and comfortable. **Hip width: 14.5" (size medium).**



- | | | |
|---------------------------------|-----------------------------------|-------------------------------|
| 010 Black/(White) | 091 Carbon Heather/(Black) | 100 White/(Black) |
| 341 Gorge Green/(White) | 419 College Navy/(White) | 493 Game Royal/(White) |
| 545 Field Purple/(White) | 657 University Red/(White) | |

WOMENS NIKE PRO LEAKPROOF PERIOD PROTECTION 3IN SHORT FQ3007 \$45.00

SIZES: XXS, XS, S, M, L, XL, 2XL
FABRIC: Body: 82% polyester/18% spandex. Panels Lining: 62% polyester/38% spandex. Gusset Lining: 66% polyester/34% spandex.
OFFER DATE: 07/01/24
END DATE: 04/01/28

Give your players the protection they need. These shorts are made with an ultrathin absorbent liner that helps prevent period leaks when worn as a backup to usual protection. Color options allow for a team-right look. An incredibly sleek design includes a superthin, absorbent liner and a sewn-in brief made to move with you. Nike Dri-FIT technology moves sweat away from your skin for quicker evaporation, helping you stay dry and comfortable. **Hip width: 14.5" (size medium).**



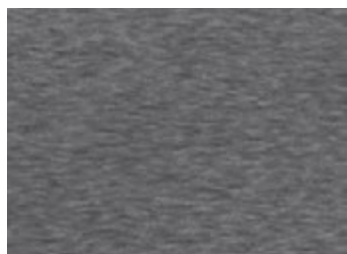
- | | | |
|---------------------------------|-----------------------------------|--------------------------|
| 010 Black/(White) | 091 Carbon Heather/(Black) | 100 White/(Black) |
| 419 College Navy/(White) | | |

WOMENS NIKE SWOOSH BRA 2.0
CJ5949 \$30.00

SIZES: XS, S, M, L, XL, 2XL
FABRIC: 88% polyester/12% spandex.
OFFER DATE: 07/01/20
END DATE: 04/01/28

Dri-FIT Nike Pro Compression Bra with updated fit and fabrication. Revised body shape for improved support. Bonded seam on front strap, side exterior seam bonded seams. The perfect bra for every activity and motion with its compression fit which provides excellent support. Every detail is carefully considered including the flat and clean finished seams. Swoosh design trademark at center chest.

- | | | |
|---------------------------------|-----------------------------------|--------------------------|
| 010 Black/(White) | 091 Carbon Heather/(Black) | 100 White/(Black) |
| 419 College Navy/(White) | 657 University Red/(White) | |



FABRIC DETAIL FOR CARBON HEATHER



WOMENS NIKE PRO ALLOVER MESH TANK
DH4901 \$30.00

SIZES: XS, S, M, L, XL, 2XL
FABRIC: 92% polyester/8% spandex.
OFFER DATE: 01/01/22
END DATE: 04/01/27

The Nike Pro Tank features allover mesh made with at least 75% recycled fibers in a slim fit that lets you move freely. Extra length at the hem keeps you covered while you bend and stretch. Nike Dri-FIT technology moves sweat away from your skin for quicker evaporation, helping you stay dry and comfortable. All over mesh offers optimal breathability to keep you cool while you train. Slim fit for a tailored feel. Customize with your team's colors for a coordinated look.
Body width: 16.75", Body length: 24.25" (size medium).

- | | |
|------------------------------------|---------------------------------|
| 010 Black/(White) | 060 Anthracite/(White) |
| 073 Dark Steel Grey/(Black) | 100 White/(Black) |
| 448 Valor Blue/(White) | 545 Court Purple/(White) |
| 610 Team Maroon/(White) | 669 Deep Maroon/(White) |
| 716 Sundown/(White) | 783 Team Gold/(White) |



BACK VIEW

WOMENS NIKE PRO ALLOVER MESH SS TOP 2.0
DH4905 \$30.00

SIZES: XS, S, M, L, XL, 2XL
FABRIC: 92% polyester/8% spandex.
OFFER DATE: 01/01/22
END DATE: 04/01/27

The Nike Pro Top prioritizes breathability with allover mesh fabric that's made with at least 75% recycled polyester fibers. Its slim fit closely follows your body's shape to let you move freely, while extra length at the hem keeps you covered front and back. Nike Dri-FIT technology moves sweat away from your skin for quicker evaporation, helping you stay dry and comfortable. Allover mesh helps keep you cool. Customize with your team's colors for a coordinated look.
Body width: 17.5", Body length: 24.25" (size medium).

- | | |
|---------------------------------|------------------------------------|
| 010 Black/(White) | 073 Dark Steel Grey/(Black) |
| 100 White/(Black) | 341 Gorge Green/(White) |
| 419 College Navy/(White) | 448 Valor Blue/(White) |
| 493 Game Royal/(White) | 545 Court Purple/(White) |
| 610 Team Maroon/(White) | 657 University Red/(White) |
| 669 Deep Maroon/(White) | 716 Sundown/(White) |
| 783 Team Gold/(White) | |



WOMENS NIKE PRO ALLOVER MESH LS TOP 2.0
DH4902 \$35.00

SIZES: XS, S, M, L, XL, 2XL
FABRIC: 92% polyester/8% spandex.
OFFER DATE: 01/01/22
END DATE: 04/01/27

The Nike Pro Top prioritizes breathability with allover mesh fabric that's made with at least 75% recycled polyester fibers. Its slim fit closely follows your body's shape to let you move freely, while extra length at the hem keeps you covered front and back. Nike Dri-FIT technology moves sweat away from your skin for quicker evaporation, helping you stay dry and comfortable. Allover mesh helps keep you cool. Customize with your team's colors for a coordinated look.
Body width: 17.5", Body length: 24.25" (size medium).



- | | |
|---------------------------------|------------------------------------|
| 010 Black/(White) | 073 Dark Steel Grey/(Black) |
| 100 White/(Black) | 341 Gorge Green/(White) |
| 419 College Navy/(White) | 448 Valor Blue/(White) |
| 493 Game Royal/(White) | 545 Court Purple/(White) |
| 610 Team Maroon/(White) | 657 University Red/(White) |
| 669 Deep Maroon/(White) | 716 Sundown/(White) |
| 783 Team Gold/(White) | |

WOMENS NIKE PRO INTERTWIST TOP 2.0
DH4897 \$55.00

SIZES: XXS, XS, S, M, L, XL, 2XL
FABRIC: 89-90% polyester/10-11% spandex. Material percentages may vary.
OFFER DATE: 01/01/22
END DATE: 04/01/27

The Nike Pro Top is made with soft, comfortable fabric and Dri-FIT technology that helps keep you dry and comfortable. The low-profile mock neck and long sleeves multiply the cozy-factor to keep you going on colder training days. Customize with your team's colors and details for a coordinated look.
Body width: 18.25", Body length: 24.25" (size medium).



- | | |
|---------------------------------|--------------------------------|
| 010 Black/(White) | 100 White/(Black) |
| 341 Gorge Green/(White) | 419 Team Navy/(White) |
| 493 Team Royal/(White) | 545 Team Purple/(White) |
| 657 Team Scarlet/(White) | 669 Deep Maroon/(White) |

MENS NIKE TECH FLEECE FZ WINDRUNNER HD
FQ1883 \$145.00

SIZES: XS, S, M, L, XL, 2XL, 3XL, ST, MT, LT, XLT, 2XLT, 3XLT
FABRIC: Body/Hood Lining: 53% cotton/47% polyester. Pocket Bag Knuckle Side: 100% cotton.
OFFER DATE: 07/01/24
END DATE: 07/01/28

Layer up in chillier weather in the classic-fitting Nike Windrunner. It updates a time-tested silhouette with our Nike Tech Fleece, giving players iconic style and all the warmth with a surprisingly lightweight feel. Dropped shoulders and paneled sleeve design helps you move with less restriction. Smooth on both sides, Tech Fleece offers premium warmth and an elevated look without adding weight or bulk. Ribbed cuffs help hold the sleeves in place while you move.

Body width: 23.5", Body length: 27.5" (size large). Tall body length: +1.25", Tall sleeve length: +1.5" (all sizes).

- | | | |
|---------------------------------|---------------------------------|-----------------------------------|
| 010 Black/(White) | 060 Anthracite/(Black) | 341 Gorge Green/(Black) |
| 419 College Navy/(Black) | 493 Game Royal/(Black) | 545 Field Purple/(Black) |
| 610 Team Maroon/(Black) | 613 Team Crimson/(Black) | 657 University Red/(Black) |
| 820 Team Orange/(Black) | | |



MENS NIKE TECH FLEECE JOGGER
FQ1884 \$125.00

SIZES: XS, S, M, L, XL, 2XL, 3XL, ST, MT, LT, XLT, 2XLT, 3XLT
FABRIC: Body: 53% cotton/47% polyester. Pocket Bag Knuckle Side: 100% cotton.
OFFER DATE: 07/01/24
END DATE: 07/01/28

Layer up in chillier weather in the classic-fitting Nike Joggers. It updates a time-tested silhouette with our Nike Tech Fleece, giving players iconic style and all the warmth with a surprisingly lightweight feel. Smooth on both sides, Tech Fleece offers premium warmth and an elevated look without adding weight or bulk. Tapered fit for a modern, streamlined look. Elastic waistband with drawcord for an adjustable fit.

Hip width: 22", Inseam length: 28.75" (size large). Offered in +2.25" length options (all sizes).

- | | | |
|---------------------------------|---------------------------------|-----------------------------------|
| 010 Black/(White) | 060 Anthracite/(Black) | 341 Gorge Green/(Black) |
| 419 College Navy/(Black) | 493 Game Royal/(Black) | 545 Field Purple/(Black) |
| 610 Team Maroon/(Black) | 613 Team Crimson/(Black) | 657 University Red/(Black) |
| 820 Team Orange/(Black) | | |



**WOMENS NIKE TEAM TECH FLEECE
WINDRUNNER HOODIE FZ
DV6737 \$145.00**

SIZES: XS, S, M, L, XL, 2XL, ST, MT, LT, XLT, 2XLT
FABRIC: Body/hood lining: 69% cotton/31% polyester. Panels lining: 100% cotton.
OFFER DATE: 05/01/23
END DATE: 07/01/28

Layer up in chillier weather in the classic-fitting Nike Windrunner. It updates a time-tested silhouette with our Nike Tech Fleece, giving you iconic style and all the warmth with a surprisingly lightweight feel. Ribbed cuffs help hold the sleeves in place while you move. Choose from 10 different color combinations to outfit your team.

Body width: 22.25", Body length: 23" (size medium).

- | | | |
|---------------------------------|-----------------------------------|---------------------------------|
| 010 Black/(White) | 060 Anthracite/(Black) | 341 Gorge Green/(Black) |
| 419 College Navy/(Black) | 493 Game Royal/(Black) | 545 Court Purple/(Black) |
| 610 Team Maroon/(Black) | 657 University Red/(Black) | 698 Team Crimson/(Black) |
| 821 Team Orange/(Black) | | |



**WOMENS NIKE TEAM TECH FLEECE PANT HR
DV6736 \$125.00**

SIZES: XS, S, M, L, XL, 2XL, ST, MT, LT, XLT, 2XLT
FABRIC: Body: 69% cotton/31% polyester. Pocket bags: 100% cotton.
OFFER DATE: 05/01/23
END DATE: 07/01/28

Keep it cozy before and after practice with the classic-fitting Nike High-Rise pants. Our supersoft Tech Fleece gives you all the warmth with hardly any of the weight. Its high-waisted design extends coverage up your core to help keep you moving comfortably and confidently. Vertical zippered pocket secures your belongings. Elastic waistband with drawcord. Choose from 10 different colors to outfit your team.

Hip width: 20.25", Inseam length: 28" (size medium).

- | | | |
|---------------------------------|-----------------------------------|---------------------------------|
| 010 Black/(White) | 060 Anthracite/(Black) | 341 Gorge Green/(Black) |
| 419 College Navy/(Black) | 493 Game Royal/(Black) | 545 Court Purple/(Black) |
| 610 Team Maroon/(Black) | 657 University Red/(Black) | 698 Team Crimson/(Black) |
| 821 Team Orange/(Black) | | |



**MENS NIKE THERMA PULLOVER HOODIE
CN9473 \$60.00**

SIZES: S, M, L, XL, 2XL, 3XL, 4XL
FABRIC: 100% polyester.
OFFER DATE: 07/01/20
END DATE: 01/01/27

The Nike Therma Hoodie features soft, thermal fabric that helps manage your body's natural heat to keep you warm — and performance high when temperatures are low. Ergonomic seams promote a natural range of motion. The scuba hood is adjustable for custom coverage. Pullover design allows for easy on and off. Front pockets.

Body width: 24", Body length: 29.5" (size large).

- | | | |
|-----------------------------|-------------------------------|--------------------------------|
| 010 Black/(White) | 060 Anthracite/(White) | 341 Dark Green/(White) |
| 419 Navy/(White) | 493 Royal/(White) | 545 Purple/(White) |
| 610 Cardinal/(White) | 657 Scarlet/(White) | 669 Dark Maroon/(White) |



**MENS NIKE THERMA PANT REGULAR
CN9483 \$60.00**

SIZES: S, M, L, XL, 2XL, 3XL, 4XL
FABRIC: 100% polyester.
OFFER DATE: 07/01/20
END DATE: 01/01/27

Nike Therma Training Pants are made with heat-managing fabric so you can stay warm when the temperature drops. Multiple pockets offer easy-access storage, while the elastic waistband allows for adjustable comfort. The side pockets offer small-item storage. An elastic waistband with drawcord provides an adjustable fit.

Hip width: 22.25", Inseam length: 31.5" (size large).

- | | | |
|-----------------------------|-------------------------------|--------------------------------|
| 010 Black/(White) | 060 Anthracite/(White) | 341 Dark Green/(White) |
| 419 Navy/(White) | 493 Royal/(White) | 545 Purple/(White) |
| 610 Cardinal/(White) | 657 Scarlet/(White) | 669 Dark Maroon/(White) |



**MENS NIKE TEAM CLUB CREW
CJ1614 \$50.00**

SIZES: S, M, L, XL, 2XL, 3XL, 4XL, LT, XLT, 2XLT, 3XLT, 4XLT
FABRIC: 80% cotton/20% polyester.
OFFER DATE: 04/01/20
END DATE: 07/01/27

Body width: 24.75", **Body length:** 27.75" (size large).
Tall body length: +1.25", **Tall sleeve length:** +1.5" (all sizes).

- | | | |
|----------------------------|--------------------------------|--------------------------------------|
| 010 Black/(White) | 060 Anthracite/(White) | 063 Dark Grey Heather/(White) |
| 100 White/(Black) | 341 Dark Green/(White) | 419 Navy/(White) |
| 493 Royal/(White) | 545 Purple/(White) | 610 Cardinal/(White) |
| 657 Scarlet/(White) | 669 Dark Maroon/(White) | |



**MENS NIKE TEAM CLUB PANT
CJ1616 \$50.00**

SIZES: S, M, L, XL, 2XL, 3XL, 4XL, LT, XLT, 2XLT, 3XLT, 4XLT
FABRIC: 80% cotton/20% polyester.
OFFER DATE: 04/01/20
END DATE: 07/01/27

Hip width: 23.25", **Inseam length:** 28.25" (size large).
Tall inseam length: +2.25" (all sizes).

- | | | |
|----------------------------|--------------------------------|--------------------------------------|
| 010 Black/(White) | 060 Anthracite/(White) | 063 Dark Grey Heather/(White) |
| 100 White/(Black) | 341 Dark Green/(White) | 419 Navy/(White) |
| 493 Royal/(White) | 545 Purple/(White) | 610 Cardinal/(White) |
| 657 Scarlet/(White) | 669 Dark Maroon/(White) | |



WOMENS NIKE TEAM CLUB PANT
CJ1790 \$50.00

SIZES: XS, S, M, L, XL, 2XL, 3XL, ST, MT, LT, XLT, 2XLT
FABRIC: 80% cotton/20% polyester.
OFFER DATE: 04/01/20
END DATE: 07/01/27

A new silhouette to the staple Club franchise, the Nike Club Joggers combine classic style with soft, brushed-back fleece for all day comfort. The on-trend tapered silhouette aligns with Nike Sportswear. Elastic waistband with drawcord has a snug fit. Elastic jogger cuffs keep the comfort close and let you show off your sneakers. Side-seam pockets. Back pocket with snap closure.

Hip width: 22.5", Inseam length: 27.5" (size medium). Tall inseam length: +2.25" (all sizes).

- | | | |
|----------------------------|--------------------------------|------------------------------------|
| 010 Black/(White) | 060 Anthracite/(White) | 063 Dk Grey Heather/(White) |
| 100 White/(Black) | 341 Dark Green/(White) | 419 Navy/(White) |
| 493 Royal/(White) | 545 Purple/(White) | 610 Cardinal/(White) |
| 657 Scarlet/(White) | 669 Dark Maroon/(White) | |



KIDS NIKE TEAM CLUB PANT
CJ1813 \$45.00

SIZES: S, M, L, XL
FABRIC: 80% cotton/20% polyester.
OFFER DATE: 04/01/20
END DATE: 07/01/27

The Nike Club Pants combine classic style with soft fleece for all day comfort. Premium brushed-back fleece is soft, warm and comfortable. Elastic waistband with drawcord has a snug fit. Elastic cuffs let you show off your kicks. **Hip width: 16", Inseam length: 25.75" (size medium).**

- | | | |
|----------------------------|--------------------------------|--------------------------------------|
| 010 Black/(White) | 060 Anthracite/(White) | 063 Dark Grey Heather/(White) |
| 100 White/(Black) | 341 Dark Green/(White) | 419 Navy/(White) |
| 493 Royal/(White) | 545 Purple/(White) | 610 Cardinal/(White) |
| 657 Scarlet/(White) | 669 Dark Maroon/(White) | |



**MENS NIKE TEAM CLUB PULLOVER HOODIE
CJ1611 \$55.00**

SIZES: S, M, L, XL, 2XL, 3XL, 4XL, MT, LT, XLT, 2XLT, 3XLT, 4XLT
FABRIC: 80% cotton/20% polyester.
OFFER DATE: 04/01/20 **END DATE:** 07/01/27

Body width: 24.75", **Body length:** 27.75" (size large).
Tall body length: +1.25", **Tall sleeve length:** +1.5" (all sizes).

- | | | |
|-------------------------------|----------------------------------|--------------------------------------|
| 010 Black/(White) | 060 Anthracite/(White) | 063 Dark Grey Heather/(White) |
| 100 White/(Black) | 249 Brown/(White) | 315 Kelly Green/(White) |
| 341 Dark Green/(White) | 419 Navy/(White) | 448 Light Blue/(White) |
| 493 Royal/(White) | 545 Purple/(White) | 610 Cardinal/(White) |
| 657 Scarlet/(White) | 669 Dark Maroon/(White) | 716 Bright Gold/(Black) |
| 783 Vegas Gold/(Black) | 802 Desert Orange/(White) | 820 Orange/(White) |



**WOMENS NIKE TEAM CLUB PULLOVER HOODIE
CJ1789 \$55.00**

SIZES: XS, S, M, L, XL, 2XL, 3XL, ST, MT, LT, XLT, 2XLT
FABRIC: 80% cotton/20% polyester.
OFFER DATE: 04/01/20 **END DATE:** 07/01/27

The Nike Club Hoodie offers warm and soft brushed-back fleece and an adjustable hood to keep you covered when temperatures drop. Updates to the fit give you room to layer and move freely. Elastic cuffs and hem for a snug fit. **Body width:** 21.5", **Body length:** 24" (size medium). **Tall body length:** +1.25", **Tall sleeve length:** +1.5" (all sizes).

- | | | |
|-------------------------------|----------------------------------|--------------------------------------|
| 010 Black/(White) | 060 Anthracite/(White) | 063 Dark Grey Heather/(White) |
| 100 White/(Black) | 249 Brown/(White) | 315 Kelly Green/(White) |
| 341 Dark Green/(White) | 419 Navy/(White) | 448 Light Blue/(White) |
| 493 Royal/(White) | 545 Purple/(White) | 610 Cardinal/(White) |
| 657 Scarlet/(White) | 669 Dark Maroon/(White) | 716 Bright Gold/(Black) |
| 783 Vegas Gold/(Black) | 802 Desert Orange/(White) | 820 Orange/(White) |



**KIDS NIKE TEAM CLUB PULLOVER HOODIE
CJ1773 \$45.00**

SIZES: S, M, L, XL
FABRIC: 80% cotton/20% polyester.
OFFER DATE: 04/01/20 **END DATE:** 07/01/27

The Nike Club Hoodie offers warm and soft brushed-back fleece and an adjustable hood to keep you covered when temperatures drop. Updates to the fit give you room to layer and move freely. Elastic cuffs and hem for a snug fit. **Body width:** 17.25", **Body length:** 21.5" (size medium).

- | | | |
|-------------------------------|----------------------------------|--------------------------------------|
| 010 Black/(White) | 060 Anthracite/(White) | 063 Dark Grey Heather/(White) |
| 100 White/(Black) | 249 Brown/(White) | 315 Kelly Green/(White) |
| 341 Dark Green/(White) | 419 Navy/(White) | 448 Light Blue/(White) |
| 493 Royal/(White) | 545 Purple/(White) | 610 Cardinal/(White) |
| 657 Scarlet/(White) | 669 Dark Maroon/(White) | 716 Bright Gold/(Black) |
| 783 Vegas Gold/(Black) | 802 Desert Orange/(White) | 820 Orange/(White) |



**MENS NIKE DRI-FIT ELEMENT 1/2-ZIP TOP
DH4949 \$75.00**

SIZES: S, M, L, XL, 2XL, 3XL
FABRIC: 88% polyester/12% spandex.
OFFER DATE: 01/01/22
END DATE: 01/01/26

A running favorite returns! Soft fabric-made with at least 75% recycled polyester fibers—and sweat-wicking technology help keep you comfortable on your runs. The Nike Dri-FIT Element Top delivers versatility with a 1/2-zip design that you can layer or wear solo and thumbholes for extending your sleeves' warmth. Customize the color and details for a team-right look.
Body width: 22.25", Body length: 29" (size large).

- | | |
|--|------------------------------------|
| 010 Black/(White) | 011 Black/Heather/(White) |
| 052 Team Blue Grey/Heather/(Black) | 060 Team Anthracite/(White) |
| 061 Team Anthracite/Heather/(White) | 341 Team Dark Green/(White) |
| 342 Team Dark Green/Heather/(White) | 419 Team Navy/(White) |
| 420 Team Navy/Heather/(White) | 493 Team Royal/(White) |
| 494 Team Royal/Heather/(White) | 657 Team Scarlet/(White) |
| 658 Team Scarlet/Heather/(White) | |



**WOMENS NIKE DRI-FIT ELEMENT 1/2-ZIP TOP
DH4951 \$75.00**

SIZES: XS, S, M, L, XL, 2XL
FABRIC: 88% polyester/12% spandex.
OFFER DATE: 01/01/22
END DATE: 01/01/26

A running favorite returns! Soft fabric-made with at least 75% recycled polyester fibers—and sweat-wicking technology help keep you comfortable on your runs. The Nike Dri-FIT Element Top delivers versatility with a 1/2-zip design that you can layer or wear solo and thumbholes for extending your sleeves' warmth. Customize the color and details for a team-right look.
Body width: 20.25", Body length: 25.5" (size medium).

- | | |
|--|------------------------------------|
| 010 Black/(White) | 011 Black/Heather/(White) |
| 052 Team Blue Grey/Heather/(Black) | 060 Team Anthracite/(White) |
| 061 Team Anthracite/Heather/(White) | 341 Team Dark Green/(White) |
| 342 Team Dark Green/Heather/(White) | 419 Team Navy/(White) |
| 420 Team Navy/Heather/(White) | 493 Team Royal/(White) |
| 494 Team Royal/Heather/(White) | 657 Team Scarlet/(White) |
| 658 Team Scarlet/Heather/(White) | |



MENS NIKE TEAM LEGEND LS TEE
DV7298 \$32.00

SIZES: S, M, L, XL, 2XL, 3XL, 4XL **FABRIC:** Body: 100% polyester. **OFFER DATE:** 04/01/23

Dri-FIT fabric wicks away sweat to help keep you comfortable and dry. Long-sleeve construction is ideal for a variety of training conditions. Neck tape added for durability and comfort. Swoosh design trademark at upper left chest. **Body width: 22.25", Body length: 29" (size large).**

Part of Tee/Fleece Embellishment Program.

- | | | |
|---|--|---------------------------------------|
| 010 Black/(Cool Grey) | 091 Carbon Heather/(Black) | 100 White/(Cool Grey) |
| 249 Dark Cinder/(Cool Grey) | 315 Apple Green/(Cool Grey) | 341 Gorge Green/(Cool Grey) |
| 419 College Navy/(Cool Grey) | 448 Valor Blue/(Cool Grey) | 493 Game Royal/(Cool Grey) |
| 545 Court Purple/(Cool Grey) | 610 Team Maroon/(Cool Grey) | 613 Team Crimson/(Cool Grey) |
| 653 Shy Pink/(Cool Grey) <i>NEW</i> | 657 University Red/(Cool Grey) | 669 Deep Maroon/(Cool Grey) |
| 700 Yellow Strike/(Cool Grey) <i>NEW</i> | 716 Sundown/(Cool Grey) | 783 Team Gold/(Cool Grey) |
| 802 Desert Orange/(Cool Grey) | 813 University Orange/(Cool Grey) | 873 Bright Ceramic/(Cool Grey) |



WOMENS NIKE LEGEND LS TEE
DV7311 \$32.00

SIZES: XS, S, M, L, XL, XXL **FABRIC:** 100% polyester. **OFFER DATE:** 04/01/23

Dri-FIT fabric wicks away sweat to help keep you comfortable and dry. Long-sleeve construction is ideal for a variety of training conditions. Neck tape added for durability and comfort. Swoosh design trademark at upper left chest. **Body width: 20.25", Body length: 24.5" (size medium).**

Part of Tee/Fleece Embellishment Program.

- | | | |
|---|--|---------------------------------------|
| 010 Black/(Cool Grey) | 091 Carbon Heather/(Black) | 100 White/(Cool Grey) |
| 249 Dark Cinder/(Cool Grey) | 315 Apple Green/(Cool Grey) | 341 Gorge Green/(Cool Grey) |
| 419 College Navy/(Cool Grey) | 448 Valor Blue/(Cool Grey) | 493 Game Royal/(Cool Grey) |
| 545 Court Purple/(Cool Grey) | 610 Team Maroon/(Cool Grey) | 613 Team Crimson/(Cool Grey) |
| 653 Shy Pink/(Cool Grey) | 657 University Red/(Cool Grey) | 669 Deep Maroon/(Cool Grey) |
| 700 Yellow Strike/(Cool Grey) <i>NEW</i> | 716 Sundown/(Cool Grey) | 783 Team Gold/(Cool Grey) |
| 802 Desert Orange/(Cool Grey) | 813 University Orange/(Cool Grey) | 873 Bright Ceramic/(Cool Grey) |



KIDS NIKE LEGEND LONG SLEEVE TEE
DV7315 \$28.00

SIZES: S, M, L, XL **FABRIC:** Body: 100% polyester. **OFFER DATE:** 04/01/23

Dri-FIT fabric wicks away sweat to help keep you comfortable and dry. Long-sleeve construction is ideal for a variety of training conditions. Neck tape added for durability and comfort. Swoosh design trademark at upper left chest. **Body width: 16.5", Body length: 23.25" (size medium).**

Part of Tee/Fleece Embellishment Program.

- | | | |
|--------------------------------------|--|---------------------------------------|
| 010 Black/(Cool Grey) | 091 Carbon Heather/(Black) | 100 White/(Cool Grey) |
| 249 Dark Cinder/(Cool Grey) | 341 Gorge Green/(Cool Grey) | 419 College Navy/(Cool Grey) |
| 448 Valor Blue/(Cool Grey) | 493 Game Royal/(Cool Grey) | 545 Court Purple/(Cool Grey) |
| 610 Team Maroon/(Cool Grey) | 613 Team Crimson/(Cool Grey) | 657 University Red/(Cool Grey) |
| 669 Deep Maroon/(Cool Grey) | 716 Sundown/(Cool Grey) | 783 Team Gold/(Cool Grey) |
| 802 Desert Orange/(Cool Grey) | 813 University Orange/(Cool Grey) | 873 Bright Ceramic/(Cool Grey) |



MENS NIKE TEAM LEGEND SS TEE
DV7299 \$28.00

SIZES: S, M, L, XL, 2XL, 3XL, 4XL **FABRIC:** Body: 100% polyester. **OFFER DATE:** 04/01/23

Dri-FIT fabric wicks away sweat to help keep you comfortable and dry. Short-sleeve construction is ideal for a variety of training conditions. Neck tape added for durability and comfort. Swoosh design trademark at upper left chest. **Body width: 22.25", Body length: 29" (size large).**
Part of Tee/Fleece Embellishment Program.

- | | | |
|---|--|---------------------------------------|
| 010 Black/(Cool Grey) | 091 Carbon Heather/(Black) | 100 White/(Cool Grey) |
| 249 Dark Cinder/(Cool Grey) | 315 Apple Green/(Cool Grey) | 341 Gorge Green/(Cool Grey) |
| 419 College Navy/(Cool Grey) | 448 Valor Blue/(Cool Grey) | 493 Game Royal/(Cool Grey) |
| 545 Court Purple/(Cool Grey) | 610 Team Maroon/(Cool Grey) | 613 Team Crimson/(Cool Grey) |
| 653 Shy Pink/(Cool Grey) <i>NEW</i> | 657 University Red/(Cool Grey) | 669 Deep Maroon/(Cool Grey) |
| 700 Yellow Strike/(Cool Grey) <i>NEW</i> | 716 Sundown/(Cool Grey) | 783 Team Gold/(Cool Grey) |
| 802 Desert Orange/(Cool Grey) | 813 University Orange/(Cool Grey) | 873 Bright Ceramic/(Cool Grey) |



WOMENS NIKE LEGEND SS TEE
DV7312 \$28.00

SIZES: XS, S, M, L, XL, XXL **FABRIC:** 100% polyester. **OFFER DATE:** 04/01/23

Dri-FIT fabric wicks away sweat to help keep you comfortable and dry. Short-sleeve construction is ideal for a variety of training conditions. Neck tape added for durability and comfort. Swoosh design trademark at upper left chest. **Body width: 20.25", Body length: 24.5" (size medium).**
Part of Tee/Fleece Embellishment Program.

- | | | |
|--------------------------------------|--|---------------------------------------|
| 010 Black/(Cool Grey) | 091 Carbon Heather/(Black) | 100 White/(Cool Grey) |
| 249 Dark Cinder/(Cool Grey) | 315 Apple Green/(Cool Grey) | 341 Gorge Green/(Cool Grey) |
| 419 College Navy/(Cool Grey) | 448 Valor Blue/(Cool Grey) | 493 Game Royal/(Cool Grey) |
| 545 Court Purple/(Cool Grey) | 610 Team Maroon/(Cool Grey) | 613 Team Crimson/(Cool Grey) |
| 653 Shy Pink/(Cool Grey) | 657 University Red/(Cool Grey) | 669 Deep Maroon/(Cool Grey) |
| 700 Yellow Strike/(Cool Grey) | 716 Sundown/(Cool Grey) | 783 Team Gold/(Cool Grey) |
| 802 Desert Orange/(Cool Grey) | 813 University Orange/(Cool Grey) | 873 Bright Ceramic/(Cool Grey) |



KIDS NIKE LEGEND SS TEE
DV7317 \$23.00

SIZES: S, M, L, XL **FABRIC:** Body: 100% polyester. **OFFER DATE:** 04/01/23

Dri-FIT fabric wicks away sweat to help keep you comfortable and dry. Short-sleeve construction is ideal for a variety of training conditions. Neck tape added for durability and comfort. Swoosh design trademark at upper left chest. **Body width: 16.5", Body length: 23.25" (size medium).**
Part of Tee/Fleece Embellishment Program.

- | | | |
|---|--|---------------------------------------|
| 010 Black/(Cool Grey) | 091 Carbon Heather/(Black) | 100 White/(Cool Grey) |
| 249 Dark Cinder/(Cool Grey) | 315 Apple Green/(Cool Grey) | 341 Gorge Green/(Cool Grey) |
| 419 College Navy/(Cool Grey) | 448 Valor Blue/(Cool Grey) | 493 Game Royal/(Cool Grey) |
| 545 Court Purple/(Cool Grey) | 610 Team Maroon/(Cool Grey) | 613 Team Crimson/(Cool Grey) |
| 653 Shy Pink/(Cool Grey) <i>NEW</i> | 657 University Red/(Cool Grey) | 669 Deep Maroon/(Cool Grey) |
| 700 Yellow Strike/(Cool Grey) <i>NEW</i> | 716 Sundown/(Cool Grey) | 783 Team Gold/(Cool Grey) |
| 802 Desert Orange/(Cool Grey) | 813 University Orange/(Cool Grey) | 873 Bright Ceramic/(Cool Grey) |



**MENS NIKE TEAM DRI-FIT FLEX WOVEN SHORT
DJ8686 \$37.00**

SIZES: S, M, L, XL, 2XL, 3XL, 4XL
FABRIC: 100% polyester.
OFFER DATE: 04/01/22 **END DATE:** 04/01/26

The Nike Dri-FIT Flex Shorts are made to keep you moving during high-intensity training. Nike Flex fabric stretches with every move, while vents at the hems are ideal for deep bends like lunges and squats. This product is made with at least 50% recycled polyester fibers and can be customized for a team-right look.
Hip width: 22.5" (size large), Inseam length: 8.25" (all sizes).

- | | | |
|-------------------------------------|-------------------------------------|------------------------------------|
| 010 Black/(White) | 060 Team Anthracite/(White) | 249 Team Brown/(White) |
| 315 Apple Green/(White) | 341 Team Dark Green/(White) | 419 Team Navy/(White) |
| 448 Team Light Blue/(White) | 493 Team Royal/(White) | 545 Team Purple/(White) |
| 610 Team Cardinal/(White) | 613 Team Crimson/(White) | 657 Team Scarlet/(White) |
| 669 Team Dark Maroon/(White) | 716 Team Bright Gold/(Black) | 783 Team Vegas Gold/(Black) |
| 802 Desert Orange/(White) | 820 Team Orange/(White) | 873 Bright Ceramic/(White) |



**WOMENS NIKE TEAM DRI-FIT FLEX 2-1 SHORT
DJ8680 \$47.00**

SIZES: XS, S, M, L, XL, 2XL
FABRIC: need
OFFER DATE: 04/01/22 **END DATE:** 04/01/26

The Nike Dri-FIT Flex Shorts have a tight, stretchy base layer underneath a loose, woven outer layer. They give you plenty of flexibility and have sweat-wicking technology to keep you dry and comfortable. Customize the colors for a team look you can be proud of. The pocket on the right is big enough to hold a phone.
Hip width: 22.25", Inseam length: 3.5" (size medium).

- | | | |
|------------------------------------|------------------------------------|-------------------------------|
| 010 Black/(White) | 060 Team Anthracite/(White) | 100 White/(Black) |
| 341 Team Dark Green/(White) | 419 Team Navy/(White) | 493 Team Royal/(White) |
| 545 Team Purple/(White) | 657 Team Scarlet/(White) | |



**KIDS NIKE TEAM DRI-FIT FLEX WOVEN SHORT
POCKETS
FD6682 \$32.00**

SIZES: XS, S, M, L, XL
FABRIC: 100% polyester.
OFFER DATE: 04/01/24 **END DATE:** 04/01/26

The Nike Dri-FIT Flex Shorts are made to keep you moving during high-intensity training. Nike Flex fabric stretches with every move, while vents at the hems are ideal for deep bends like lunges and squats. Customize the colors for a team-right look. With pockets.
Hip width: 17.25", Inseam length: 7" (size medium).

- | | | |
|---------------------------------|-----------------------------------|---------------------------------|
| 010 Black/(White) | 060 Anthracite/(White) | 341 Gorge Green/(White) |
| 419 College Navy/(White) | 493 Game Royal/(White) | 545 Field Purple/(White) |
| 610 Team Maroon/(White) | 657 University Red/(White) | 669 Deep Maroon/(White) |



NEW
NIKE TEAM FILL PARKA
HF7143 \$250.00

SIZES: S, M, L, XL, 2XL, 3XL
FABRIC: Body: 100% nylon. Lining: 100% polyester. Fill: 100% polyester.
OFFER DATE: 04/01/26
END DATE: 01/01/30

Water-repellent woven fabric and polyester fill work together to help keep players and coaches warm in cold, wet conditions. • Adjustment pull on back of hood provide coverage options. • Zippered hand pockets provide secure storage for game essentials. • Storm flap secures zipper closure with bottom and top snaps. • Adjustable cuffs provide quick adjustments to keep out the cold. • Loose fit makes it easy to move and layer without restriction. **Body width: 27", Body length: 34.5" (size large).**

- 010** Black/(White) **060** Team Anthracite/(White) **419** Team Navy/(White)



MENS NIKE TEAM DOWN FILL PARKA
DJ6526 \$245.00

SIZES: S, M, L, XL, 2XL, 3XL
FABRIC: 100% polyester.
OFFER DATE: 07/01/21
END DATE: 04/01/26

Stay warm, dry, and protected, the 550 down parka is completely integrated with Storm-FIT shell for maximum protection in the elements. Proven winner in the coldest of elements and on the sideline. Seam sealed full front zipper with hidden side zippered pockets. **Body width: 27", Body length: 34.5" (size large).**

- 010** Black/(White) **060** Team Anthracite/(White) **419** Team Navy/(White)



NEW
NIKE TEAM WATERPROOF RAIN JACKET
HF7146 \$200.00

SIZES: XS, S, M, L, XL, 2XL, 3XL, 4XL
FABRIC: Face of fabric: 100% polyester. Back of fabric: 100% nylon.
OFFER DATE: 04/01/26
END DATE: 01/01/30

Seam-sealed waterproof fabric keeps players and coaches dry in wet conditions. • Removable hood and adjustment pull on back of hood provide coverage options. • Zippered or open hand pockets provide quick storage for game essentials. • Loose fit makes it easy to move and layer without restriction.
Body width: 26.5", Body length: 29.75" (size large).

-
- 010 Black/(White)
 - 060 Team Anthracite/(White)
 - 419 Team Navy/(White)



NEW
NIKE TEAM WATERPROOF RAIN PANT
HF7136 \$150.00

SIZES: XS, S, M, L, XL, 2XL, 3XL, 4XL
FABRIC: Face of fabric: 100% polyester. Back of fabric: 100% nylon.
OFFER DATE: 04/01/26
END DATE: 01/01/30

Seam-sealed waterproof fabric keeps players and coaches dry in wet conditions. • Zippered or open hand and back pockets provide quick storage for game essentials. • Ankle snap provides easy on and off and quick fit adjustments. • Standard fit for a relaxed look and feel.
Hip width: 24", Inseam length: 31.5" (size large).

-
- 010 Black/(White)
 - 060 Team Anthracite/(White)
 - 419 Team Navy/(White)



MENS NIKE WATERPROOF JACKET
DA4967 \$205.00

SIZES: S, M, L, XL, 2XL, 3XL, 4XL
FABRIC: 100% polyester.
OFFER DATE: 07/01/21
END DATE: 04/01/26

Storm-FIT 5 fabric provides protection from the elements. Bonded seams repel wind and rain. Mesh lining in jacket and center back perforated vent system provides breathability. Zip pockets on jacket for secure storage. Reflective chevron and Swoosh for an elevated design. Adjustable hood for ultimate coverage from the elements. Toggle at hem and hook-and-loop tab at cuff for adjustability. Standard fit for ultimate comfort for the modern athlete. Packable pocket technology with ability to place full jacket into pocket for compact storage.
Body width: 25", Body length: 30.5" (size large).

- 010** Black
- 060** Team Anthracite/Black



MENS NIKE WATERPROOF PANT
DA4984 \$145.00

SIZES: S, M, L, XL, 2XL, 3XL, 4XL
FABRIC: 100% polyester.
OFFER DATE: 07/01/21
END DATE: 04/01/26

Storm-FIT 10 fabric provides protection from the elements. Bonded seams repel wind and rain. Mesh lining in pant provides breathability. Elastic waistband with interior drawcord on pants for an adjustable fit. Zipper at pant hem provides ventilation and easy on/off. Snaps at hem for adjusting the inseam/outseam length, can be shortened up to 1¾". Standard fit for ultimate comfort for the modern athlete.
Hip width: 23.25", Inseam length: 31.5" (size large).

- 010** Black
- 060** Team Anthracite/Black



AERO FLIGHT FZ3023 \$162.00

SIZES: 5

FABRIC: 37% polyurethane (PU)/33% rubber/20% polyester/10% cotton.

OFFER DATE: 04/01/24

When you don't stop no matter the conditions, you need a ball to match. Featuring a grippy texture for wet or dry conditions and a four-panel design that creates a larger sweet spot, the Flight soccer ball helps you excel on the field, rain or shine. Nike Aerowsculpt technology uses molded grooves to disrupt airflow across the ball for less drag and more stable flight. Four fused panels create a larger sweet spot for powerful strikes. All Conditions Control (ACC) technology adds a grippy texture in both wet and dry conditions.

100 White/Blackened Blue/(Crimson)



NIKE NFHS CLUB ELITE TEAM FZ7549 \$62.00

SIZES: 5

FABRIC: 40% rubber/40% synthetic leather/15% synthetic/5% cotton.

OFFER DATE: 04/01/24

The NFHS Club Elite Team Soccer Ball is ready to fly into the back of the net. A textured casing with stabilizing grooves gives you consistent touch when passing, shooting and dribbling. Nike Aerowsculpt technology uses molded grooves for more consistent flight. Textured casing offers great touch and feel on your foot. 12-panel design provides true and accurate ball flight. Rubber bladder helps maintain air pressure and shape.

100 White/Black/(Metallic Silver)



NIKE CLUB ELITE FZ2986 \$62.00

SIZES: 5

FABRIC: 40% rubber/40% polyurethane (PU)/15% polyester/5% cotton.

OFFER DATE: 04/01/24

Rip your next shot by the keeper with the Club Elite Soccer Ball. Its molded grooves disrupt airflow so the ball has a more stable flight through the air. Defenders beware: Textured casing helps you maintain a consistent touch while your footwork dazzles. Nike Aerowsculpt technology uses molded grooves to disrupt airflow across the ball for less drag and more stable flight. Textured casing has a consistent touch when passing, shooting and dribbling. Rubber bladder helps maintain air pressure and shape

100 White/Blackened Blue/(Crimson)



**NIKE ACADEMY PLUS
FZ2632 \$47.00**

SIZES: 4, 5
FABRIC: 60% rubber/15% polyurethane (PU)/13% polyester/12% ethylene vinyl acetate (EVA).
OFFER DATE: 04/01/24

For those who want to optimize ball control, let your next strike be with an Academy Plus ball. Nike Aerowsculpt grooves help stabilize airflow for more uniform flight, while high-contrast graphics help the ball stick out so you're able to better focus on making magic with your feet. Nike Aerowsculpt technology uses molded grooves to disrupt airflow across the ball for less drag and more stable flight. Textured casing has a consistent touch when passing, shooting and dribbling. Rubber bladder helps maintain air pressure and shape. Twelve-panel design provides true and accurate ball flight.

100 White/Blackened Blue/(Crimson)



**NIKE ACADEMY
FZ2966 \$32.00**

SIZES: 3, 4, 5
FABRIC: 67% rubber/13% polyester/10% ethylene vinyl acetate (EVA)/10% polyurethane (PU).
OFFER DATE: 04/01/24

Optimize dribbling with textured casing, visibility with high-contrast graphics and accuracy with molded grooves so you can focus on the game not the equipment. Nike Aerowsculpt technology uses molded grooves to disrupt airflow across the ball for less drag and more stable flight. Rubber bladder helps maintain air pressure and shape. Textured casing has a consistent touch when passing, shooting and dribbling.

100 White/Blackened Blue/(Crimson)



**NIKE PITCH
FZ2636 \$22.00**

SIZES: 3, 4, 5
FABRIC: 60% rubber/15% polyurethane (PU)/13% polyester/12% ethylene vinyl acetate (EVA).
OFFER DATE: 04/01/24

Kick off your love for the game with the Nike Pitch Soccer Ball. Made for your beginner training sessions and enhancing your footwork, this ball features a durable casing to help maintain consistent performance. Machine-stitched casing optimizes shape, feel and durability. Rubber bladder helps maintain air pressure and shape.

100 White/Blackened Blue/(Crimson)



**NIKE FUTSAL PRO
DH1992 \$42.00**

FABRIC: 60% rubber/15% polyurethane/13% polyester/12% EVA.
OFFER DATE: 04/01/24

The Nike Futsal Pro Soccer Ball provides exceptional touch and control for the small-sided game. It has a textured casing with high-contrast graphics making it easy to track across the pitch.



100 White/Volt/(Silver)

**NIKE CLUB TEAM BALL BAG - 160L
BA5200 \$52.00**

FABRIC: 88% polyester/12% nylon. **OFFER DATE:** 04/01/24

The Nike Club Team Ball Bag offers plenty of room to store all of the squad's soccer balls to and from practice. It features a flat bottom to keep it upright and steady, while padded straps give you hassle-free hauling. Adjustable shoulder straps are padded for comfortable carrying. Drawcord closure lets you quickly access your gear. Lightweight mesh promotes ventilation.



010 Black/Black/(White)

**NIKE ACADEMY TEAM BACKPACK 2.3
DVO761 \$57.00**

SIZES: Misc **OFFER DATE:** 07/01/22 **END DATE:** 12/31/26

Tough 600D polyester • Large dual-zippered main compartment • Zippered wet/dry compartment • Laser perforations help enhance ventilation • Haul loop at top for alternative carry option • Padded curved shoulder straps • Padded back panel • Mesh side pocket for water bottle storage • Front pocket holds up to a size 5 ball
DIMENSIONS: 19" H x 14" W x 6.5" D



011 Black/Black/(White)

065 Cool Grey/Cool Grey/(White)

410 Midnight Navy/Midnight Navy/(White)

480 Game Royal/Game Royal/(White)

657 University Red/University Red/(White)

NIKE HYPERSPEED BALL PUMP SWOOSH
N.100.2867 \$20.00

CONTENTS: 77% acrylonitrile-butadiene-styrene copolymer/12% rubber/6% zinc alloy/4%thermoplastic elastomer/1% nylon.

Dual-action, efficient pump for super-fast filling. Detachable extension hose.

073 Black/Metallic Gold/Metallic Gold

622 University Red/Black/Black



NIKE ESSENTIAL BALL PUMP
N.000.1384 \$12.00

CONTENTS: 83% acrylonitrile-butadie.

Compact design with attached hose for easy transport. Efficient pump compresses air for fast filling.

180 White/Metallic Gold/Black

423 Game Royal/University Red/White

430 Blue Fury/Hyper Crimson/Blackened Blue/Hyper Crimson



NIKE ESSENTIAL BALL PUMP
N.KJ.01 \$12.00

CONTENTS: 83% acrylonitrile-butadiene-styrene copolymer/8% rubber/5% thermoplasticelastomer/3% zinc alloy/1% nylon.

Compact design with attached hose for easy transport. Efficient pump compresses air for fast filling.

027 Black/White/White

420 Game Royal/White/White

681 University Red/White/White

753 Volt/Black/Black



NIKE 3-IN-1 AGILITY RING SYSTEM
NEWN.100.6727 \$70.00

SIZES: OSFM
CONTENTS: 48.25% polypropylene/48.25% high density polyethylene/2.1% nylon/ 1.4% aluminum.

3-in-1 rings for agility, hurdle and ladder exercises. Textured side is used for hurdles while the smooth side is best for agility web and ladder exercises. Rings fold in half for easy carrying and storing.

815 Total Orange/Total Orange//Total Orange



NIKE SPEED LADDER NP
N.101.2428 \$50.00

CONTENTS: Ladder: 100% polypropylene. Carry bag: 80% polyester/20% nylon.

Lightweight 6-rung design folds up for easy carrying and storing. End connectors make it easy to link multiple ladders.

710 Volt/Black



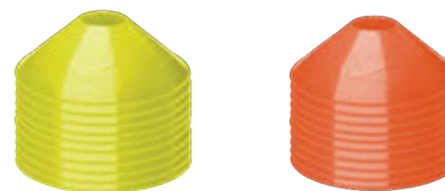
NIKE TRAINING CONES 10 PK
N.SR.08 \$12.00

CONTENTS: 100% polyethylene.

Ideal for sports and agility training. Bright color for increased visibility.

709 Volt

888 Total Orange



NIKE FUTBOL ARM BAND 2.0
N.SN.05 \$10.00

SIZES: OSFM

CONTENTS: 73% polyester/19% rubber/8% nylon.

Stretch elastic fabric provides a comfortable fit.

-
- | | | |
|------------------------|-----------------------|--------------------------------|
| 101 White/Black | 710 Volt/Black | 850 Total Crimson/Black |
|------------------------|-----------------------|--------------------------------|



NIKE DRI-FIT FURY CLASSIC HEADBAND
N.101.1706 \$14.00

SIZES: OSFM

CONTENTS: 79% polyester/14% silicone/7% spandex.

Nike Dri-FIT technology helps you stay dry and comfortable. Silicone strips help hold the headband in place and channel sweat away from your eyes.

-
- | | | |
|--|-----------------------------------|---------------------------------------|
| 027 Black/White/White | 127 White/Black/Black | 308 Gorge Green/White/White |
| 407 University Blue/White/White | 420 Game Royal/White/White | 473 College Navy/White/White |
| 550 Court Purple/White/White | 618 Vivid Pink/White/White | 681 University Red/White/White |
| 813 Safety Orange/White/White | | |



NIKE FUEL JUG 64 OZ CHUG
N.100.3111 \$30.00

CONTENTS: 55% polypropylene/35% high density polyethylene/9% pu foam/1% silicone.

Lightweight insulation helps keep beverages cold. Handle doubles as a fence hook. Twist-off cap for easy opening and drinking.

-
- 058** Black/Anthracite/White **153** White/Anthracite/Black **476** Game Royal/Anthracite/White
 - 503** Light Thistle/Anthracite/White



NIKE FUEL JUG 40 OZ CHUG
N.100.3110 \$26.00

CONTENTS: 53% polypropylene/31% high density polyethylene/14% pu foam/2% silicone.

Lightweight insulation helps keep beverages cold. Handle doubles as a fence hook. Twist-off cap for easy opening and drinking.

-
- 058** Black/Anthracite/White **153** White/Anthracite/Black **503** Light Thistle/Anthracite/White



**NIKE REFUEL BOTTLE LOCKING LID 32 OZ
N.100.7670 \$20.00**

CONTENTS: 63.23% low density polyethylene/18.71% polypropylene/9.94% thermoplasticelastomer/6.05% acrylonitrile butadiene styrene/1.21% silicone/ 0.86% stainless steel.

Flip-top lid locks into place for easy closure, squeezable material and fast-flow,leakproof valve for hydration on the go, foldable handle for easy storing and carrying,strategically placed overlay adds an extra layer of comfort and grip, bottle fitscomfortably in your hand.

- | | |
|---|---|
| 054 Anthracite/Black/Silver Iridescent | 125 Natural/Black/Black Iridescent |
| 420 Baltic Blue/Black/Black Iridescent | 423 Game Royal/Black/Silver Iridescent |
| 501 Action Grape/Black/Metallic Gold | 511 Vivid Grape/Black/Silver Iridescent |
| 637 Pink Spell/Black/Silver Iridescent | 640 University Red/Black/Silver Iridescent |
| 646 Aster Pink/Black/Silver Iridescent | 703 Sundial/Black/Black Iridescent |
| 705 Volt/Black/Black Iridescent | 728 Metallic Gold/Black/Black Iridescent |



**NIKE REFUEL BOTTLE 24 OZ
N.100.7666 \$12.00**

CONTENTS: 76.08% low density polyethylene/22.76% polypropylene/1.16% silicone.

Squeezable material for quick hydration on the go, textured surface is easy to hold ,bottle fits comfortably in your hand.

- | | | |
|------------------------------------|---------------------------------------|-------------------------------------|
| 086 Wolf Grey/Black/White | 091 Black/Black/White | 125 Natural/Black/Black |
| 422 Baltic Blue/Black/White | 492 Game Royal/Black/White | 505 Vivid Purple/Black/White |
| 634 Pink Glow/Black/White | 692 University Red/Black/White | 704 Sundial/Black/White |
| 753 Volt/Black/Black | | |



NIKE BRASILIA LARGE DUFFEL 9.5
DO9193 \$52.00

SIZES: Misc
 OFFER DATE: 07/01/22
 END DATE: 07/01/26

Tough 600D polyester • Durable 300D polyester • Detachable shoulder strap • Ventilated shoe or wet/dry storage • Secure zip pocket • Limited lifetime guarantee • Screened Swoosh design trademark
 DIMENSIONS: 28" L x 12" W x 14" H

010 Black/Black/(White)



NIKE BRASILIA BACKPACK XL 9.5
DM3975 \$57.00

SIZES: Misc
 OFFER DATE: 07/01/22
 END DATE: 07/01/26

Tough 600D polyester • Durable 300D polyester • Multiple pockets for organization • Water bottle pocket • Screened Swoosh branding
 DIMENSIONS: 19" H x 13" W x 10.5" D

010 Black/Black/(White) 068 Iron Grey/Black/(White) 410 Midnight Navy/Black/(White)



NIKE BRASILIA MEDIUM BACKPACK 9.5
DH7709 \$45.00

SIZES: Misc
 OFFER DATE: 07/01/22
 END DATE: 07/01/26

Durable, heavyweight 600D polyester • Large zippered main compartment • Medium-sized zippered compartment • Interior small-item zippered pocket • Separate, padded internal sleeve • Padded shoulder strap • Side mesh pockets • Limited lifetime guarantee • Screened Swoosh design trademark
 DIMENSIONS: 18" H x 12" W x 7" D

010 Black/Black/(White) 068 Iron Grey/Black/(White) 410 Midnight Navy/Black/(White)



NIKE BRASILIA MEDIUM DUFFEL 9.5
DH7710 \$42.00

SIZES: Misc
 OFFER DATE: 07/01/22
 END DATE: 07/01/26

Tough 600D polyester • Durable 300D polyester • Detachable shoulder strap • Ventilated shoe or wet/dry storage • Secure zip pocket • Limited lifetime guarantee • Screened Swoosh design trademark
 DIMENSIONS: 24" L x 11" W x 13" H

010 Black/Black/(White) 068 Iron Grey/Black/(White) 410 Midnight Navy/Black/(White)



NIKE BRASILIA SMALL DUFFEL 9.5
DM3976 \$37.00

SIZES: Misc
 OFFER DATE: 07/01/22
 END DATE: 07/01/26

Tough 600D polyester • Durable 300D polyester • Detachable shoulder strap • Ventilated shoe or wet/dry storage • Secure zip pocket • Limited lifetime guarantee • Screened Swoosh design trademark
 DIMENSIONS: 20" L x 10" W x 11" H

010 Black/Black/(White) **068** Iron Grey/Black/(White) **410** Midnight Navy/Black/(White)



NIKE BRASILIA XSMALL DUFFEL 9.5
DM3977 \$32.00

SIZES: Misc
 OFFER DATE: 07/01/22
 END DATE: 07/01/26

Tough 600D polyester • Durable 300D polyester • Detachable shoulder strap • Ventilated shoe or wet/dry storage • Secure zip pocket • Limited lifetime guarantee • Screened Swoosh design trademark
 DIMENSIONS: 20" L x 10" W x 11" H

010 Black/Black/(White) **410** Midnight Navy/Black/(White)



NIKE BRASILIA SHOE BAG 9.5
DM3982 \$22.00

SIZES: Misc
 OFFER DATE: 07/01/22
 END DATE: 07/01/26

The Nike Utility Shoe Tote helps keep your shoes separate from the rest of your gear between home, work and the gym. The ventilated design is made of tough fabric and includes an outside pocket and handles for convenience.
 DIMENSIONS: 12" L x 6" W x 7" H

010 Black/Black/(White)



NIKE BRASILIA DRAWSTRING 9.5
DM3978 \$18.00

SIZES: Misc
 OFFER DATE: 07/01/22
 END DATE: 07/01/26

Tough 600D polyester • Durable 300D polyester • Drawstring closure / Easy access to contents • Zippered front pocket • Screened Swoosh branding
 DIMENSIONS: 20" H x 15" W x 2" D

010 Black/Black/(White) **068** Iron Grey/Black/(White) **410** Midnight Navy/Black/(White)



**NIKE EVERYDAY PLUS CUSHION CREW 3PPK
SX6888 \$18.00**

ORDERS ACCEPTED IN INCREMENTS OF 6 PPK UNITS ONLY

SIZES: S, M, L, XL
FABRIC: 60% polyester/26% nylon/12% cotton/2% spandex.
OFFER DATE: 01/01/19

Cushioned terry foot / Comfort and shock absorption • Dri-FIT fabric / Wicks away moisture to keep feet dry and cool • Arch support / Snug, secure fit • Anatomical left and right / Superior fit and cushioning
SIZE: XL sock = M 12-15 shoe size; L sock = M 8-12 shoe size, W 10-13 shoe size; M sock = M 6-8 shoe size, W 6-10 shoe size.

010 Black/(White) **100** White/(Black)



**NIKE EVERYDAY PLUS CUSHION ANKLE 3PPK
SX6890 \$18.00**

ORDERS ACCEPTED IN INCREMENTS OF 6 PPK UNITS ONLY

SIZES: S, M, L, XL
FABRIC: 53% polyester/23% nylon/22% cotton/2% spandex
OFFER DATE: 01/01/19

Cushioned, medium-density padding / Impact absorption • Dri-FIT fabric / Wicks away moisture to keep feet dry and cool • Arch support / Snug, secure fit • Anatomical left and right / Superior fit and cushioning
SIZE: XL sock = M 12-15 shoe size; L sock = M 8-12 shoe size, W 10-13 shoe size; M sock = M 6-8 shoe size, W 6-10 shoe size.

010 Black/(White) **100** White/(Black)



**NIKE EVERYDAY PLUS CUSHION LOW 3PPK
SX7040 \$18.00**

ORDERS ACCEPTED IN INCREMENTS OF 6 PPK UNITS ONLY

SIZES: S, M, L, XL
FABRIC: 60% polyester/26% nylon/12% cotton/2% spandex
OFFER DATE: 01/01/19

Cushioned terry foot / Comfort and shock absorption • Dri-FIT fabric / Wicks away moisture to keep feet dry and cool • Arch support / Snug, secure fit • Anatomical left and right / Superior fit and cushioning
SIZE: XL sock = M 12-15 shoe size; L sock = M 8-12 shoe size, W 10-13 shoe size; M sock = M 6-8 shoe size, W 6-10 shoe size.

010 Black/(White) **100** White/(Black)



**NIKE EVERYDAY PLUS CUSHION
NO SHOW 3PPK SX6889 \$18.00**

ORDERS ACCEPTED IN INCREMENTS OF 6 PPK UNITS ONLY

SIZES: S, M, L, XL
FABRIC: 53% polyester/23% nylon/22% cotton/2% spandex.
OFFER DATE: 01/01/19

Cushioned, medium-density padding / Impact absorption • Dri-FIT fabric / Wicks away moisture to keep feet dry and cool • Arch support / Snug, secure fit • Anatomical left and right / Superior fit and cushioning
SIZE: XL sock = M 12-15 shoe size; L sock = M 8-12 shoe size, W 10-13 shoe size; M sock = M 6-8 shoe size, W 6-10 shoe size.

010 Black/(White) **100** White/(Black)



CONTACT INFORMATION

NA SOCCER SPECIALTY SR. PARTNER REPS

LAURIE ARCHAMBAULT
310-941-7007
laurie.arch@nike.com
SOUTHERN CALIFORNIA

ROBERT BOYLE
971-727-5065
robert.boyle@nike.com
SOCCER.COM

DANIEL WITHROW
248-935-7606
daniel.withrow@nike.com
PNW, NORTHERN CALIFORNIA

TIM BLAKE
630-263-2671
tim.blake@nike.com
IL, MN, WI, IN, MI, LA

MIKE SURBER
860-227-9462
mike.surber@nike.com
NEW ENGLAND: CT, MA, RI,
ME, NH, VT, NY

RUSSELL PATMORE
404-668-1938
russell.patmore@nike.com
SOCCER POST: INCLUDING
NC, SC, GA, FL, TN, AL, MS

TIM STORK
515-238-3059
tim.stork@nike.com
HEARTLAND: CO, WY, ND, SD,
NE, KS, OK, TX, IA, MO, OH

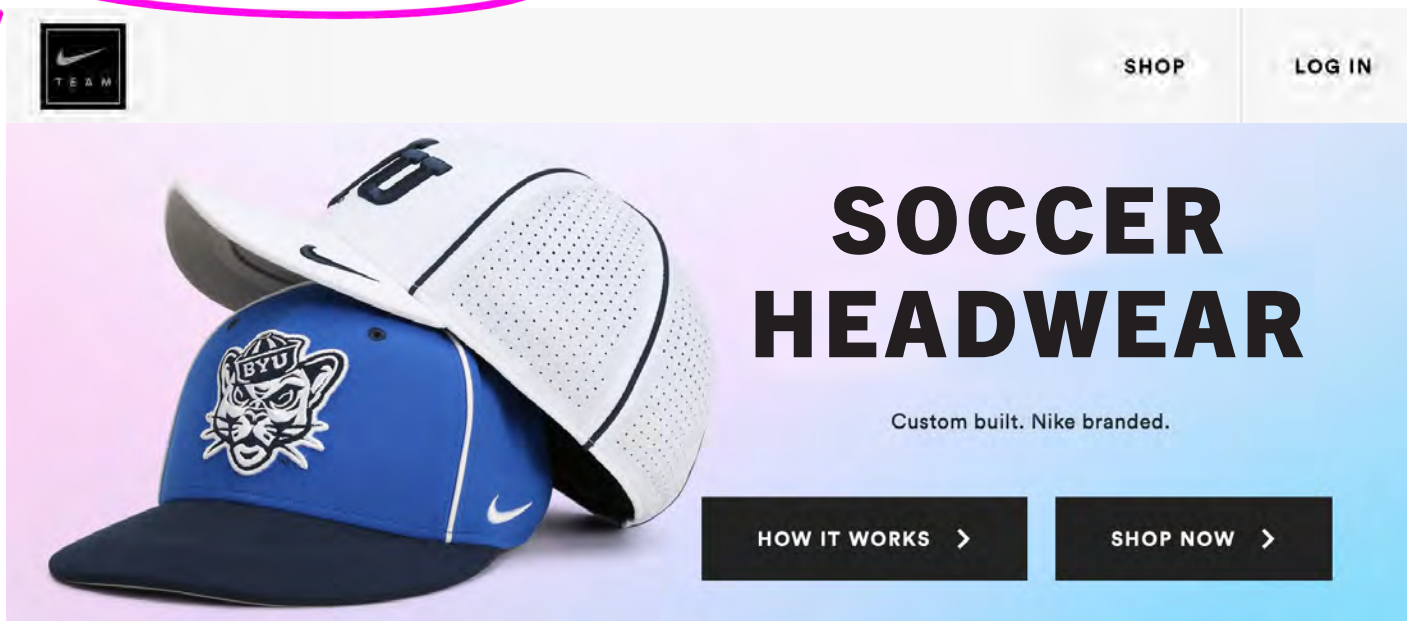
STACY FRANKS
336-549-1926
stacy.franks@nike.com



BUILD CUSTOM NIKE HEADWEAR IN 3 EASY STEPS

1. Go to nike.teamheadwear.com and create an account.

GO
HERE!



2. Design your headwear using our easy-to-use **online builder**:

- Choose from **12 CUSTOM** and **14 STOCK** headwear styles
- Select your colors, fabric & back closure
- Add your LOGO
- Customize further with add-ons like an Aerobill, piping or a player tag.

SO
EASY.

3. Save and Send your custom design to your customer or teammate for approval.

FAST & EASY SHIPPING! NUMEROUS DECORATING OPTIONS AVAILABLE!

